

Molded Spur Gears - 24 Pitch

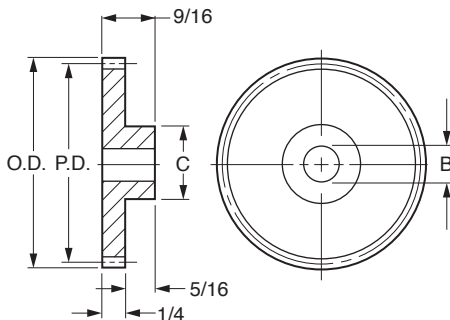
Stock Drive Products/Sterling Instrument

Phone: 516-328-3300

Fax: 516-326-8827

■ 20° PRESSURE ANGLE

■ 1/4 FACE

**MATERIAL:** Acetal

Catalog Number	No. of Teeth	P.D.	O.D.	B Bore	C Hub Dia.	Type	
A 1M 2-Y24012	12	.500	.583	3/16	3/8	Plain	
A 1M 2-Y24014	14	.583	.667		7/16		
A 1M 2-Y24015	15	.625	.708		31/64		
A 1M 2-Y24016	16	.667	.750				
A 1M 2-Y24017	17	.708	.792		35/64		
A 1M 2-Y24018	18	.750	.833				
A 1M 2-Y24019	19	.792	.875				
A 1M 2-Y24020	20	.833	.917				
A 1M 2-Y24021	21	.875	.958	3/16	35/64		
A 1M 2-Y24022	22	.917	1.000				
A 1M 2-Y24023	23	.958	1.042	3/16	35/64	Web	
A 1M 2-Y24024	24	1.000	1.083	1/4	5/8		
A 1M 2-Y24025	25	1.042	1.125		39/64		
A 1M 2-Y24026	26	1.083	1.167		5/8		
A 1M 2-Y24027	27	1.125	1.208				
A 1M 2-Y24028	28	1.167	1.250				
A 1M 2-Y24030	30	1.250	1.333				
A 1M 2-Y24032	32	1.333	1.417		39/64		
A 1M 2-Y24033	33	1.375	1.458				
A 1M 2-Y24034	34	1.417	1.500				
A 1M 2-Y24036	36	1.500	1.583	5/16			43/64
*A 1M 2-Y24036A							
A 1M 2-Y24039	39	1.625	1.708		43/64		
A 1M 2-Y24040	40	1.667	1.750				
A 1M 2-Y24042	42	1.750	1.833				
A 1M 2-Y24044	44	1.833	1.917				
A 1M 2-Y24045	45	1.875	1.958				
A 1M 2-Y24048	48	2.000	2.083				
A 1M 2-Y24050	50	2.083	2.167				
A 1M 2-Y24052	52	2.167	2.250				
A 1M 2-Y24054	54	2.250	2.333				
A 1M 2-Y24056	56	2.333	2.417				
A 1M 2-Y24060	60	2.500	2.583				

*Color: Gray

Discounts available on large quantity orders.