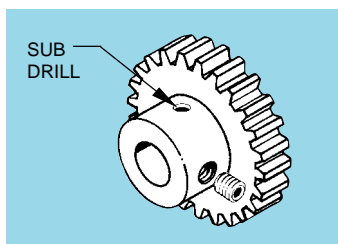
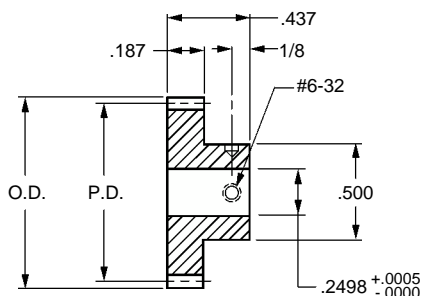


■ AGMA Q10

■ 20° PRESSURE ANGLE

■ 3/16 FACE

■ 1/4 BORE

**S** Precision Component

Catalog Number		No. of Teeth	P.D.	O.D.
303 Stainless Steel	2024 Aluminum * Anodized			
S1086Z-032S014	S1086Z-032A014	14	0.4375	0.500
S1086Z-032S016	S1086Z-032A016	16	0.5000	0.563
S1086Z-032S018	S1086Z-032A018	18	0.5625	0.625
S1086Z-032S020	S1086Z-032A020	20	0.6250	0.688
S1086Z-032S022	S1086Z-032A022	22	0.6875	0.750
S1086Z-032S024	S1086Z-032A024	24	0.7500	0.813
S1086Z-032S026	S1086Z-032A026	26	0.8125	0.875
S1086Z-032S028	S1086Z-032A028	28	0.8750	0.938
S1086Z-032S030	S1086Z-032A030	30	0.9375	1.000
S1086Z-032S032	S1086Z-032A032	32	1.0000	1.063
S1086Z-032S034	S1086Z-032A034	34	1.0625	1.125
S1086Z-032S036	S1086Z-032A036	36	1.1250	1.188
S1086Z-032S040	S1086Z-032A040	40	1.2500	1.313
S1086Z-032S048	S1086Z-032A048	48	1.5000	1.563
S1086Z-032S052	S1086Z-032A052	52	1.6250	1.688
S1086Z-032S056	S1086Z-032A056	56	1.7500	1.813
S1086Z-032S060	S1086Z-032A060	60	1.8750	1.938
S1086Z-032S064	S1086Z-032A064	64	2.0000	2.063
S1086Z-032S072	S1086Z-032A072	72	2.2500	2.313
S1086Z-032S076	S1086Z-032A076	76	2.3750	2.438
S1086Z-032S080	S1086Z-032A080	80	2.5000	2.563
S1086Z-032S088	S1086Z-032A088	88	2.7500	2.813
S1086Z-032S092	S1086Z-032A092	92	2.8750	2.938
S1086Z-032S096	S1086Z-032A096	96	3.0000	3.063
S1086Z-032S100	S1086Z-032A100	100	3.1250	3.188
S1086Z-032S112	S1086Z-032A112	112	3.5000	3.563
S1086Z-032S120	S1086Z-032A120	120	3.7500	3.813
S1086Z-032S128	S1086Z-032A128	128	4.0000	4.063
S1086Z-032S130	S1086Z-032A130	130	4.0625	4.125
S1086Z-032S132	S1086Z-032A132	132	4.1250	4.188

* T4 or T351 Aluminum Alloy, anodized before cutting.

Available on special order: 14-1/2° P.A., teeth not listed, different bore size and/or material, passivation for stainless steel.