

## FOR 9 mm BELTS

FOR USE WITH GT®2 and GT®3 BELTS

DOUBLE FLANGE

TRUE METRIC® PROFILE

PHONE: 516.328.3300 • FAX: 516.326.8827 • WWW.SDP-SI.COM



## &gt; MATERIAL:

Aluminum Alloy

## &gt; FINISH:

Clear Anodized

## &gt; SPECIFICATIONS:

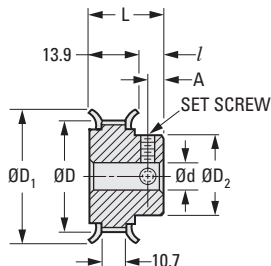
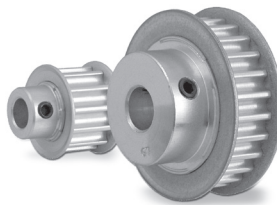
D Tolerance: 12 to 16 grooves is +0.05/0

17 to 32 grooves is +0.08/0

34 grooves is +0.10/0

Pulleys with 12 and 13 grooves have

1 set screw; others have 2 set screws at 90°.



## METRIC COMPONENT

Catalog Number	No. of Grooves	P.D.	D Dia.	D <sub>1</sub> Dia. ± 0.4	d Bore +0.025 0	L Length ± 0.4	D <sub>2</sub> Hub Dia. ± 0.4	I / Hub Proj.	A	Set Screw
A 6A55M012DF0906	12	19.1	17.96	22.2	6	20.2	11.1	6.4	3.2	M3
A 6A55M013DF0906	13	20.7	19.56	23.8			12.7			
A 6A55M014DF0906	14	22.28	21.13	25.4			14.2			
A 6A55M015DF0906	15	23.88	22.73	27			15.9			
A 6A55M016DF0906	16	25.48	24.33	27.8			17.5			
A 6A55M017DF0906	17	27.05	25.91	30.2			19.1			
A 6A55M018DF0906	18	28.65	27.51	31.8			20.6			
A 6A55M019DF0906	19	30.25	29.11	33.3			23.8			
A 6A55M020DF0906	20	31.83	30.68	34.9			25.4			
A 6A55M022DF0906	22	35.03	33.88	38.1			27			
A 6A55M024DF0910	24	38.2	37.06	41.3	10	23.4	30.2	9.5	4.8	M5
A 6A55M025DF0910	25	39.78	38.63	42.9			31.8			
A 6A55M026DF0910	26	41.38	40.23	44.5	12	26.6	35	12.7	6.4	M6
A 6A55M028DF0912	28	44.55	43.41	47.6						
A 6A55M030DF0912	30	47.75	46.61	50.8						
A 6A55M032DF0912	32	50.93	49.78	54						
A 6A55M034DF0912	34	54.1	52.96	57.2						