



Catalog Series	Unique Features	Material	Bore	Pages
 S57PY5-SU...	Single, Miniature, Zero Backlash	303 Stainless Steel Body, 440 Stainless Steel Balls	Solid .0938 to .250	7-4
 S57PY5-DU...	Double, Miniature, Zero Backlash	303 Stainless Steel Body, 440 Stainless Steel Balls	.0938 to .250	7-4
 S57PY4-SFU...	Single, Inverted Design, Zero Backlash	303 Stainless Steel Body, 440 Stainless Steel Balls	.1875 to .500	7-5
 S57PY4-DFU...	Double, Inverted Design, Zero Backlash	303 Stainless Steel Body, 440 Stainless Steel Balls	.1875 to .500	7-5
 A 5Y 8-DM...	Single, Short Series, Solid and Bored	303 Stainless Steel	Solid 3/16 to 1/2	7-6
 A 5Y 8-DU...	Single, Step-Down Series	303 Stainless Steel	.125 to .250	7-6
 A 5Q 8-D...	Single, Standard Design, Solid and Bored	Alloy Steel	Solid .1875 to .500	7-7
 A 5Q 8-DM...	Single, Solid and Bored	Alloy Steel	Solid 3/16 - 1/2	7-8

Catalog Series	Unique Features	Material	Bore	Pages
 A 5Q 8-D...	Single, Hand-Operated	Die Cast Zinc	1/4 to 1/2	7-8
 A 5X 8-SE...	Double, Telescoping, Heat- and Corrosion-Resistant	303 Series SS Joints, 416 Stainless Steel Spline	.2500 to .6250	7-9
 A 5Q 8-DD...	Double, Slow Speed	Alloy Steel	Solid .1875 to .5000	7-9
 S57PY5-DUT...	Double, Telescoping, Miniature, Ball Spline, Zero Backlash	303 Stainless Steel Body, 440 Stainless Steel Balls	.0938 to .2500	7-10
 S57PY4-DFUT...	Double, Telescoping, Inverted Design, Ball Spline, Zero Backlash	440 Stainless Steel Body, 440 Stainless Steel Balls	.1875 to .5000	7-10
 A 5M 8-D...	Single, Molded, Economy Series	Acetal	1/8 to 7/16	7-12
 A 5M 8-DD...	Double, Molded, Economy Series	Acetal	1/8 to 7/16	7-12

Catalog Series	Unique Features	Material	Bore	Pages
 A 5T 8-D...	Single, Molded, Brass Spider	Acetal Body, Brass Spider	1/8 to 7/16	7-13
 A 5Z 8-D...	Single, Molded, Brass Spider & Inserts	Acetal Body, Brass Spider & Inserts	1/8 to 3/8	7-13
 A 5T 8-DD...	Double, Molded, Brass Spider	Acetal Body, Brass Spider	1/8 to 7/16	7-14
 A 5Z 8-DD...	Double, Molded, Brass Spider and Inserts	Acetal Body, Brass Spider and Inserts	1/8 to 3/8	7-14
 A 5M 8-SE...	Double, Telescoping, Molded, Economy Series	Acetal	3/16, 1/4, 5/16	7-15
 A 5T 8-SE3...	Double, Telescoping, Molded, Brass Spider, 3/8 O.D.	Acetal Body & Extension, Brass Spider	3/16 & 1/4	7-16
 A 5Z 8-SE3...	Double, Telescoping, Molded, Brass Spider and inserts, 3/8 O.D.	Acetal Body and Extension, Brass Spider and Inserts	1/8 & 3/16	7-16
 A 5T 8-SE4...	Double, Telescoping, Molded, Brass Spider, 1/2 O.D.	Acetal Body and Extension, Brass Spider	3/16, 1/4, 5/16	7-17

Catalog Series	Unique Features	Material	Bore	Pages
 <p>A 5Z 8-SE4..</p>	Double, Telescoping, Molded, Brass Spider and Inserts, 1/2 O.D.	Acetal Body and Extension, Brass Spider and Inserts	3/16 & 1/4	7-17
 <p>A 5Z 8-SEB...</p>	Double, Telescoping, Molded, Brass Spider Inserts and Extension	Acetal Body, Brass Spider, Inserts and Extension	1/8 to 3/8	7-18

I

R

T

1

2

3

4

5

6

7

8

9

10

11

12

13

14

15

16

Stock Drive Products pioneered the concept of combining the exceptional qualities of selected plastic materials with different metals to create products which incorporate both.



SUPER-PLAST® designs have the following advantages:

1. Inexpensive replacement of metal components, particularly for low torque applications.
2. As vibration dampers due to the resiliency of plastics used.
3. For drives used in corrosive environments or for chemical processing equipment.
4. For drives which have to be electrically insulated.
5. For domestic appliances and other intermittent duty applications.

The SDP line of molded universal joints is a valuable extension of the above capabilities, and they are shown on the following pages:

Name	Description	Series	Page
Universal Single Joint	All Molded Metal Spider (No Insert) Metal Spider and Insert	A 5M 8-D...	7-12
		A 5T 8-D...	7-13
		A 5Z 8-D...	7-13
Universal Double Joint	All Molded Metal Spider (No Insert) Metal Spider and Insert	A 5M 8-DD...	7-12
		A 5T 8-DD...	7-14
		A 5Z 8-DD...	7-14
Universal Joint With Molded Slide Extension	All Molded Metal Spider (No Insert) Metal Spider and Insert	A 5M 8-SE...	7-15
		A 5T 8-SE...	7-16, 7-17
		A 5Z 8-SE...	7-16, 7-17
Universal Joint With Brass Slide Extension	Metal Spider and Insert	A 5Z 8-SEB...	7-18

The above products are available from stock in standard configurations as presented in the catalog pages. They can also be manufactured to special requirements, with partial modification of existing tools. These "specials" can consist of:

- a) Bores molded to accommodate square, "D" shape or hexagonal shafts.
- b) Shafts molded into the components themselves.
- c) Zero backlash or components with built-in backlash.
- d) Gears, pulleys or other components molded or assembled to couplings or universal joints.

Please consult SDP Application Engineering for further details.

SINGLE & DOUBLE JOINT
ECONOMY SERIES

PHONE: 516.328.3300 • FAX: 516.326.8827 • WWW.SDP-SI.COM



► **MATERIAL:**
Body & Spider - Molded Acetal



► **MAX. OPERATING TEMPERATURE:**
180°F

► **SPECIFICATIONS:**
Max. Angular Displacement - Fig. 1: 45°
Fig. 2: 90°

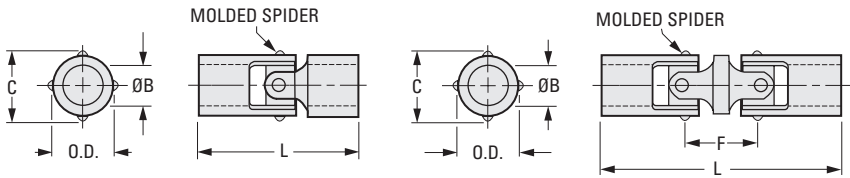


Fig. 1 Single Joint

Fig. 2 Double Joint

INCH COMPONENT

Catalog Number	O.D.	B Bore +.000 -.002	Bore Depth (Typ)	L Overall Length	C	F	Max. Torque lbf in.	Max. Parallel Offset
Fig. 1 Single Joint								
A 5M 8-D204	1/4	1/8	.23	3/4	.26	—	1.9	—
A 5M 8-D206	1/4	3/16	.23	3/4	.26	—	1.9	—
A 5M 8-D306	3/8	3/16	.34	1-1/8	.42	—	8.0	—
A 5M 8-D308	3/8	1/4	.34	1-1/8	.42	—	8.0	—
A 5M 8-D406	1/2	3/16	.42	1-25/64	.54	—	18.0	—
A 5M 8-D408	1/2	1/4	.42	1-25/64	.54	—	18.0	—
A 5M 8-D410	1/2	5/16	.42	1-25/64	.54	—	18.0	—
A 5M 8-D508	5/8	1/4	.58	2-5/64	.65	—	37.0	—
A 5M 8-D510	5/8	5/16	.58	2-5/64	.65	—	37.0	—
A 5M 8-D512	5/8	3/8	.58	2-5/64	.65	—	37.0	—
A 5M 8-D514	5/8	7/16	.58	2-5/64	.65	—	37.0	—
Fig. 2 Double Joint								
A 5M 8-DD204	1/4	1/8	.23	1-1/16	.26	5/16	1.7	.22
A 5M 8-DD206	1/4	3/16	.23	1-1/16	.26	5/16	1.7	.22
A 5M 8-DD306	3/8	3/16	.34	1-41/64	.42	17/32	6.0	.36
A 5M 8-DD308	3/8	1/4	.34	1-41/64	.42	17/32	6.0	.36
A 5M 8-DD406	1/2	3/16	.42	2-1/64	.54	5/8	11.0	.43
A 5M 8-DD408	1/2	1/4	.42	2-1/64	.54	5/8	11.0	.43
A 5M 8-DD410	1/2	5/16	.42	2-1/64	.54	5/8	11.0	.43
A 5M 8-DD508	5/8	1/4	.58	2-61/64	.65	7/8	32.0	.61
A 5M 8-DD510	5/8	5/16	.58	2-61/64	.65	7/8	32.0	.61
A 5M 8-DD512	5/8	3/8	.58	2-61/64	.65	7/8	32.0	.61
A 5M 8-DD514	5/8	7/16	.58	2-61/64	.65	7/8	32.0	.61

ELECTRICALLY INSULATING

PHONE: 516.328.3300 • FAX: 516.326.8827 • WWW.SDP-SI.COM

➤ MATERIAL:

Body - Molded Acetal
Spider & Insert - Nickel Plated Brass

➤ MAX. OPERATING TEMPERATURE:

180°F

➤ SPECIFICATIONS:

Max. Angular Displacement: 45°

B Bore Tolerance:

Fig. 1 Plain: +.000/-0.002

Fig. 2 With Insert: +.001/-0.000

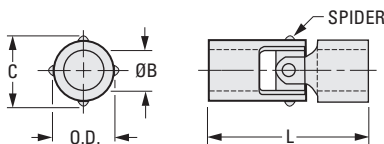
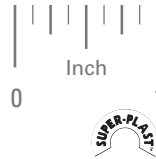


Fig. 1 Plain

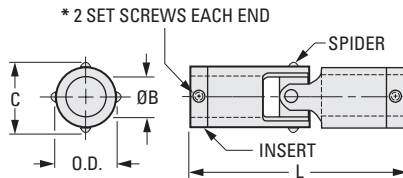


Fig. 2 With Insert

INCH COMPONENT

Catalog Number	O.D.	B Bore	Bore Depth (Typ)	L Overall Length	C	Set Screw	Max. Torque lbf in.
Fig. 1 Plain							
A 5T 8-D204	1/4	1/8	.23	3/4	.27	—	5
A 5T 8-D206	1/4	3/16	.23	3/4	.27	—	5
A 5T 8-D306	3/8	3/16	.34	1-1/8	.41	—	16
A 5T 8-D308	3/8	1/4	.34	1-1/8	.41	—	16
A 5T 8-D406	1/2	3/16	.42	1-25/64	.54	—	26
A 5T 8-D408	1/2	1/4	.42	1-25/64	.54	—	26
A 5T 8-D410	1/2	5/16	.42	1-25/64	.54	—	26
A 5T 8-D508	5/8	1/4	.58	2-5/64	.68	—	60
A 5T 8-D510	5/8	5/16	.58	2-5/64	.68	—	60
A 5T 8-D512	5/8	3/8	.58	2-5/64	.68	—	60
A 5T 8-D514	5/8	7/16	.58	2-5/64	.68	—	60
Fig. 2 With Insert							
A 5Z 8-D204	1/4	*1/8	.39	1-3/64	.27	#4-40	5
A 5Z 8-D304	3/8	*1/8	.52	1-31/64	.41	#4-40	16
A 5Z 8-D306	3/8	3/16	.52	1-31/64	.41	#4-40	16
A 5Z 8-D406	1/2	3/16	.63	1-13/16	.54	#6-32	26
A 5Z 8-D408	1/2	1/4	.63	1-13/16	.54	#6-32	26
A 5Z 8-D508	5/8	1/4	.86	2-41/64	.68	#8-32	60
A 5Z 8-D510	5/8	5/16	.86	2-41/64	.68	#8-32	60
A 5Z 8-D512	5/8	3/8	.86	2-41/64	.68	#8-32	60

* One set screw each end.

ELECTRICALLY INSULATING

PHONE: 516.328.3300 • FAX: 516.326.8827 • WWW.SDP-SI.COM

► **MATERIAL:**

Body - Molded Acetal
Spider & Insert - Nickel Plated Brass

► **MAX. OPERATING TEMPERATURE:**
180°F

► **SPECIFICATIONS:**

Max. Angular Displacement: 90°

B Bore Tolerance:

Fig. 1 Plain: +.000/-0.002

Fig. 2 With Insert: +.001/-0.000

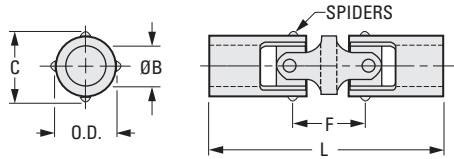
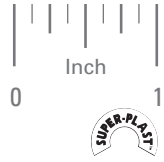


Fig. 1 Plain

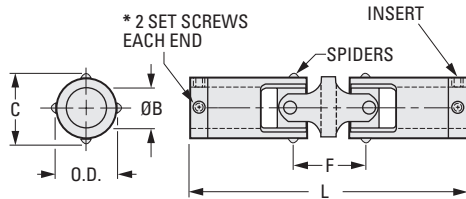


Fig. 2 With Insert

INCH COMPONENT

Catalog Number	O.D.	B Bore	Bore Depth (Typ)	L Overall Length	C	F	Set Screw	Max. Torque lbf in.	Max. Parallel Offset
Fig. 1 Plain									
A 5T 8-DD204	1/4	1/8	.23	1-1/16	.27	5/16	—	2.5	.22
A 5T 8-DD206	1/4	3/16	.23	1-1/16	.27	5/16	—	2.5	.22
A 5T 8-DD306	3/8	3/16	.34	1-41/64	.41	17/32	—	7.0	.36
A 5T 8-DD308	3/8	1/4	.34	1-41/64	.41	17/32	—	7.0	.36
A 5T 8-DD406	1/2	3/16	.42	2-1/64	.54	5/8	—	12.0	.43
A 5T 8-DD408	1/2	1/4	.42	2-1/64	.54	5/8	—	12.0	.43
A 5T 8-DD410	1/2	5/16	.42	2-1/64	.54	5/8	—	12.0	.43
A 5T 8-DD508	5/8	1/4	.58	2-61/64	.68	7/8	—	47.0	.61
A 5T 8-DD510	5/8	5/16	.58	2-61/64	.68	7/8	—	47.0	.61
A 5T 8-DD512	5/8	3/8	.58	2-61/64	.68	7/8	—	47.0	.61
A 5T 8-DD514	5/8	7/16	.58	2-61/64	.68	7/8	—	47.0	.61
Fig. 2 With Insert									
A 5Z 8-DD204	1/4	*1/8	.39	1-23/64	.27	5/16	#4-40	2.5	.22
A 5Z 8-DD304	3/8	*1/8	.52	2	.41	17/32	#4-40	7.0	.36
A 5Z 8-DD306	3/8	3/16	.52	2	.41	17/32	#4-40	7.0	.36
A 5Z 8-DD406	1/2	3/16	.63	2-7/16	.54	5/8	#6-32	12.0	.43
A 5Z 8-DD408	1/2	1/4	.63	2-7/16	.54	5/8	#6-32	12.0	.43
A 5Z 8-DD508	5/8	1/4	.86	3-33/64	.68	7/8	#8-32	47.0	.61
A 5Z 8-DD510	5/8	5/16	.86	3-33/64	.68	7/8	#8-32	47.0	.61
A 5Z 8-DD512	5/8	3/8	.86	3-33/64	.68	7/8	#8-32	47.0	.61

* One set screw each end.