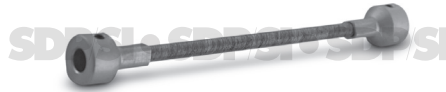


WITHOUT CASING

PHONE: 516.328.3300 • FAX: 516.326.8827 • WWW.SDP-SI.COM

> MATERIAL:

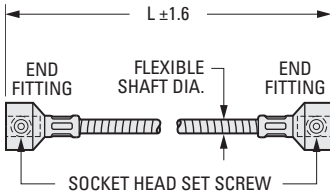
Flexible Cable - Stainless Steel
End Fittings - Stainless Steel



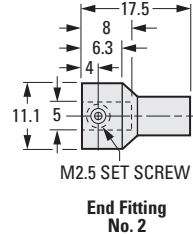
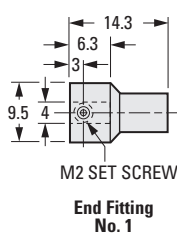
> PERFORMANCE DATA:

Shaft Dia.	Mode of Operation	Operating Torque Capacity, Winding and Unwinding Directions (N•m) Input								Maximum Torsional Deflection at Load Indicated (Degrees per 30 cm of Shaft)		
		Radius of Curvature								N•m	Winding	Unwinding
		625	500	375	300	250	200	150	100			
3.3	Manual	1.12	1.08	1.01	0.94	0.87	0.76	0.59	0.24	0.113	11	20
	Dynamic	0.65	0.63	0.59	0.55	0.51	0.44	0.34	0.14			
3.8	Manual	1.69	1.63	1.52	1.42	1.31	1.15	0.89	0.36	0.113	7	10
	Dynamic	0.99	0.95	0.89	0.83	0.77	0.67	0.52	0.21			
4.8	Manual	2.89	2.78	2.6	2.42	2.24	1.97	1.52	0.62	0.113	2.7	4.8
	Dynamic	1.69	1.62	1.52	1.41	1.31	1.15	0.89	0.36			
6.4	Manual	7.32	6.94	6.32	5.69	5.06	4.12	2.55	—	1.13	9	12.6
	Dynamic	4.27	4.05	3.68	3.32	2.95	2.4	1.49	—			

SPECIAL ORDERS for Many Combinations of Fittings and Lengths Accepted.



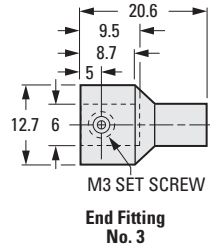
The projections shown are per ISO convention.



METRIC COMPONENT

Catalog Number*	Flexible Shaft Diameter	L Length mm	End Fitting Number	Screw Size
S55S7MFSF33075	3.3	75	1	M2
S55S7MFSG33075			2	M2.5
S55S7MFSF33100		100	1	M2
S55S7MFSG33125		125	2	M2.5
S55S7MFSH33125			3	M3
S55S7MFSH33150		150		
S55S7MFSH38150	3.8	300	2	M2.5
S55S7MFSH38300		300		
S55S7MFSG48200	4.8	200	3	M3
S55S7MFSH48250		250		
S55S7MFSH64300	6.4	300		

* To be discontinued when present stock is depleted.



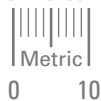
- I
- R
- T
- 1
- 2
- 3
- 4
- 5
- 6
- 7
- 8
- 9
- 10
- 11
- 12
- 13
- 14
- 15
- A

WITHOUT CASING

PHONE: 516.328.3300 • FAX: 516.326.8827 • WWW.SDP-SI.COM

► MATERIAL:

Flexible Cable - Steel
End Fittings - Plated Steel



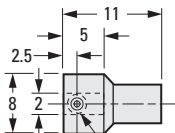
► PERFORMANCE DATA:

Shaft Dia.	Mode of Operation	Operating Torque Capacity, Winding and Unwinding Directions (N•m) Input											Maximum Torsional Deflection at Load Indicated (Degrees per 30 cm of Shaft)		
		Radius of Curvature											N•m	Winding	Unwinding
		625	500	375	300	250	200	150	100	62	50	38			
1.7	Dynamic	-	-	-	-	0.07	0.06	0.05	0.04	*	-	-	0.113	80	250
	Manual	-	-	-	-	-	-	-	0.22	0.17	0.13	0.06	0.113	40	50
3.3	Manual	-	-	-	0.86	0.8	0.75	0.63	0.41	-	-	-	0.113	13	13
	Dynamic	-	-	-	0.43	0.41	0.37	0.32	0.2	-	-	-	0.113	13	13
3.8	Manual	-	2.36	2.2	2.08	1.94	1.73	1.37	0.7	-	-	-	0.113	6	6
	Dynamic	-	1.19	1.11	1.04	0.97	0.87	0.69	0.35	-	-	-	0.113	6	6
4.8	Manual	-	3.77	3.55	3.22	3.12	2.8	2.24	1.13	-	-	-	0.113	3	3.3
	Dynamic	-	1.89	1.77	1.66	1.56	1.4	1.12	0.57	-	-	-	0.113	3	3.3
6.4	Manual	10.51	9.79	9.38	8.59	7.91	7.01	5.09	-	-	-	-	1.13	10	13
	Dynamic	5.31	4.63	4.63	4.29	3.96	3.5	2.6	-	-	-	-	1.13	10	13
	Dynamic	5.31	4.63	4.63	4.29	3.96	3.5	2.6	-	-	-	-	1.13	10	13

SPECIAL ORDERS for Many Combinations of Fittings and Lengths Accepted.

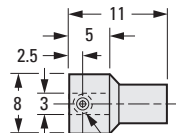
* Can be operated manually to radius indicated with torsional breaking strength of 0.68 N•m clockwise.

Δ Can be used in dynamic mode if shaft length is shortened (approximately 50 mm long).



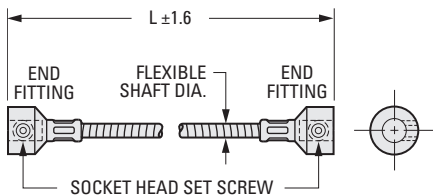
SET SCREW

End Fitting No. 1A

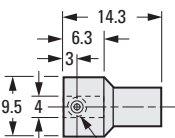


M2 SET SCREW

End Fitting No. 1B

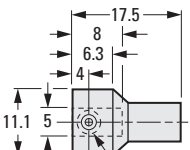


The projections shown are per ISO convention.



M2 SET SCREW

End Fitting No. 1



M2.5 SET SCREW

End Fitting No. 2

METRIC COMPONENT

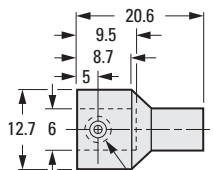
Catalog Number	Flexible Shaft Diameter	L Length mm	End Fitting Number
A 7C12M1705011	1.7	50	1A
A 7C12M1707611		76	1B
A 7C12M1710211		102	1B
A 7C12M3307611A	3.3A	76	1
A 7C12M3312722A		127	2
A 7C12M3320333A		203	3
A 7C12M3307622	3.3	76	2
A 7C12M3312733		127	3
A 7C12M3320333		203	3
A 7C12M3810222	3.8	102	2
A 7C12M3815233		152	3
A 7C12M3820333		203	3
A 7C12M3830533	4.8	305	3
A 7C12M4825433		254	3
A 7C12M4830533		305	3
A 7C12M6430533	6.4	305	3
A 7C12M6435544		355	4

NOTE: 3.3A diameter shaft has a greater degree of flexibility.

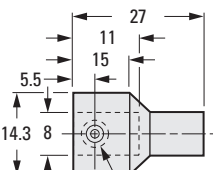
End Fitting No. 1

End Fitting No. 3

End Fitting No. 4



M3 SET SCREW



M4 2 SET SCREWS

WITHOUT CASING
PANEL MOUNTING

PHONE: 516.328.3300 • FAX: 516.326.8827 • WWW.SDP-SI.COM

> MATERIAL:

- Flexible Cable - Steel
- End Fittings - Plated Steel



> PERFORMANCE DATA:

Shaft Dia.	Mode of Operation	Operating Torque Capacity, Winding and Unwinding Directions (N • m) Input										Maximum Torsional Deflection at Load Indicated (Degrees per 30 cm of Shaft)		
		Radius of Curvature										N • m	Winding	Unwinding
		500	375	300	250	200	150	100	62	50	38			
3.3A	Manual	-	-	-	-	-	-	0.22	0.17	0.13	0.06	0.113	40	50
3.3		-	-	0.86	0.8	0.75	0.63	0.41	-	-	-		13	13
3.8		2.36	2.2	2.08	1.94	1.72	1.36	0.7	-	-	-		6	6
4.8		3.78	3.55	3.32	3.12	2.8	2.24	1.13	-	-	-		3	3.3

SPECIAL ORDERS for Many Combinations of Fittings and Lengths Accepted.

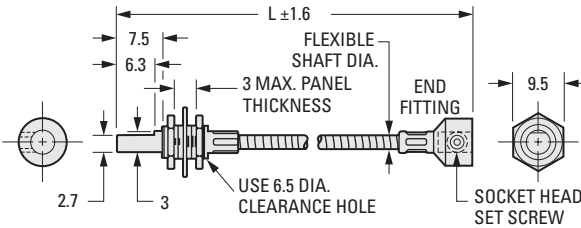
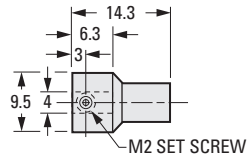


Fig. 1



End Fitting No. 1

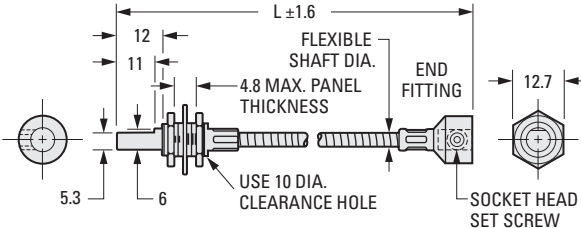
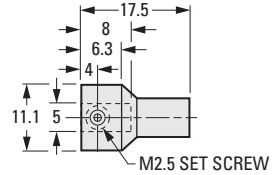


Fig. 2



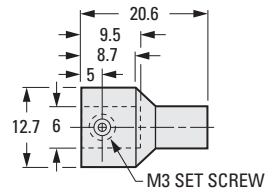
End Fitting No. 2

The projections shown are per ISO convention.

METRIC COMPONENT

Catalog Number	Flexible Shaft Diameter	L Length mm	End Fitting Number
Fig. 1			
A 7C13M3307611A	3.3A	76	1
A 7C13M3310222A		102	2
Fig. 2			
A 7C13M3307611	3.3	76	1
A 7C13M3310222		102	2
A 7C13M3812722	3.8	127	2
A 7C13M3820333		203	3
A 7C13M4822822		228	2
A 7C13M4820333	4.8	203	3
A 7C13M4835533		355	3

NOTE: 3.3A diameter shaft has a greater degree of flexibility.



End Fitting No. 3

I
R
T
1
2
3
4
5
6
7
8
9
10
11
12
13
14
15
A