



Catalog Series	Unique Features	Material	Bore	Pages
 <p>S57PY5-SU...</p>	Single, Miniature, Zero Backlash	303 Stainless Steel Body, 440 Stainless Steel Balls	.0928 to .250	7-4
 <p>S57PY5-DU...</p>	Double, Miniature, Zero Backlash	303 Stainless Steel Body, 440 Stainless Steel Balls	.0938 to .250	7-4
 <p>S57PY4-SFU...</p>	Single, Inverted Design, Zero Backlash	303 Stainless Steel Body, 440 Stainless Steel Balls	.1875 to .500	7-5
 <p>S57PY4-DFU...</p>	Double, Inverted Design, Zero Backlash	303 Stainless Steel Body, 440 Stainless Steel Balls	.1875 to .500	7-5
 <p>A 5Y 8-DM...</p>	Single, Short Series, Solid and Bored	303 Stainless Steel	Solid 3/16 to 1/2	7-6
 <p>A 5Y 8-DU...</p>	Single, Step-Down Series	303 Stainless Steel	.125 to .250	7-6
 <p>A 5Q 8-D...</p>	Single, Standard Design, Solid and Bored	Alloy Steel	Solid .1875 to .500	7-7
 <p>A 5Q 8-DM...</p>	Single, Solid and Bored	Alloy Steel	Solid 3/16 - 1/2	7-8

Catalog Series	Unique Features	Material	Bore	Pages
 A 5D 8-D...	Single, Hand-Operated	Die Cast Zinc	1/4 to 1/2	7-8
 S57PY5-DUT...	Double, Telescoping, Miniature, Ball Spline, Zero Backlash	303 Stainless Steel Body, 440 Stainless Steel Balls	.0938 to .2500	7-9
 S57PY4-DFUT...	Double, Telescoping, Inverted Design, Ball Spline, Zero Backlash	440 Stainless Steel Body, 440 Stainless Steel Balls, 300 Series Stainless Steel Ends & Flanges	.1875 to .5000	7-9
 A 5X 8-SE...	Double, Telescoping, Heat- and Corrosion-Resistant	303 Series Stainless Steel Joints, 416 Stainless Steel Spine	.2500 to .6250	7-10
 A 5Q 8-DD...	Double, Slow Speed	Alloy Steel	Solid .1875 to .5000	7-10
 A 5M 8-D...	Single, Molded, Economy Series	Acetal	1/8 to 7/16	7-12
 A 5M 8-DD...	Double, Molded, Economy Series	Acetal	1/8 to 7/16	7-12

Catalog Series	Unique Features	Material	Bore	Pages
 A 5T 8-D...	Single, Molded, Brass Spider Electrically Insulating	Acetal Body, Brass Spider	1/8 to 7/16	7-13
 A 5Z 8-D...	Single, Molded, Brass Spider & Inserts Electrically Insulating	Acetal Body, Brass Spider & Inserts	1/8 to 3/8	7-13
 A 5T 8-DD...	Double, Molded, Brass Spider Electrically Insulating	Acetal Body, Brass Spider	1/8 to 7/16	7-14
 A 5Z 8-DD...	Double, Molded, Brass Spider & Inserts Electrically Insulating	Acetal Body, Brass Spider and Inserts	1/8 to 3/8	7-14
 A 5M 8-SE...	Double, Telescoping, Molded, Economy Series	Acetal	3/16, 1/4, 5/16	7-15
 A 5T 8-SE3..	Double, Telescoping, Molded, Brass Spider, 3/8 O.D.	Acetal Body & Extension, Brass Spider	3/16 & 1/4	7-16
 A 5Z 8-SE3..	Double, Telescoping, Molded, Brass Spider & Inserts, 3/8 O.D.	Acetal Body and Extension, Brass Spider and Inserts	1/8 & 3/16	7-16
 A 5T 8-SE4..	Double, Telescoping, Molded, Brass Spider 1/2 O.D.	Acetal Body and Extension, Brass Spider	3/16, 1/4, 5/16	7-17

Catalog Series	Unique Features	Material	Bore	Pages
 <p>A 5Z 8-SE4..</p>	Double, Telescoping, Molded, Brass Spider & Inserts, 1/2 O.D.	Acetal Body and Extension, Brass Spider and Inserts	3/16 & 1/4	7-17
 <p>A 5Z 8-SEB...</p>	Double, Telescoping, Molded, Brass Spider Inserts & Extension, Electrically Insulating	Acetal Body, Brass Spider, Inserts and Extension	1/8 to 3/8	7-18

I

R

T

1

2

3

4

5

6

7

8

9

10

11

12

13

14

15

A

SINGLE & DOUBLE JOINTS
ZERO BACKLASH

PHONE: 516.328.3300 • FAX: 516.326.8827 • WWW.SDP-SI.COM

> **MATERIAL:**

Body - 303 Stainless Steel
Balls - 440 Stainless Steel

> **LUBRICATION:**

Dual protection, with sealed-in solid film plus oil suspension

> **FEATURES:**

Zero backlash through use of precision balls and burnished sockets
Sealed-in lubrication
Lightweight
Low inertia

> **SPECIFICATIONS:**

Maximum Operating Angle:

Single Joint: 30° at 4000 rpm
Double Joint: 60° at 4000 rpm

Torque Ratings:

For static conditions with in-line loading, maximum load being one which causes joint to yield.

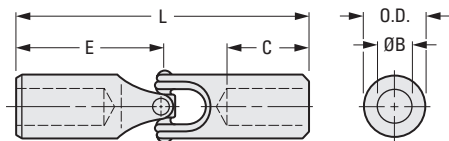


Fig. 1 Single Joint

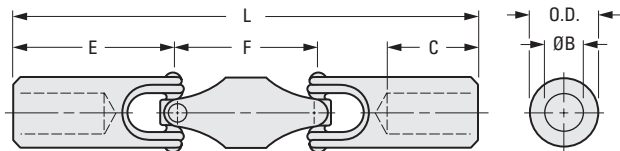


Fig. 2 Double Joint

These joints can be made into telescoping units by mating them with telescoping miniature ball splines:

S59PY5-... - pg. 4-24

S59PQ5-... - pg. 4-25

INCH COMPONENT

Catalog Number	O.D.	B Bore +.0005 -.0000	C Bore Depth	E End Unit	F Center	L	Torque ozf in.
Fig. 1 Single Joint							
S57PY5-SU0306	3/16	.0938	11/32	1/2	—	1	16
S57PY5-SU0406		.1250					
S57PY5-SU0609	9/32	.1875	7/16	11/16		1-3/8	64
S57PY5-SU0812	3/8	.2500	1/2	7/8		1-3/4	256
*S57PY5-SU0812T							
Fig. 2 Double Joint							
S57PY5-DU0306	3/16	.0938	11/32	1/2	1/2	1-1/2	16
S57PY5-DU0406		.1250					
S57PY5-DU0609	9/32	.1875	7/16	11/16	5/8	2	64
S57PY5-DU0812	3/8	.2500	1/2	7/8	3/4	2-1/2	256
*S57PY5-DU0812T							

* 1-tapped hole, #6-32, 1/4" from each end. Two set screws installed.

INVERTED DESIGN UNIVERSAL JOINTS



SINGLE & DOUBLE JOINTS
ZERO BACKLASH

PHONE: 516.328.3300 • FAX: 516.326.8827 • WWW.SDP-SI.COM

► **MATERIAL:**

Body - 303 Stainless Steel
Balls - 440 Stainless Steel

► **LUBRICATION:**

Dry film plus oil suspension

► **FEATURES:**

Zero backlash is attained with patented design and close dimensional control of components.
Torque is transmitted by hardened steel balls operating in burnished sockets.
Elastic preload between components eliminates all clearances.
Inverted design reduces size, weight and inertia for a given torque capacity.
Sealed-in lubrication.

► **SPECIFICATIONS:**

Maximum Operating Angle:

Fig. 1 Single Joint: 20° at 2000 rpm

Fig. 2 Double Joint: 40° at 2000 rpm

Torque Ratings:

For static conditions with in-line loading.

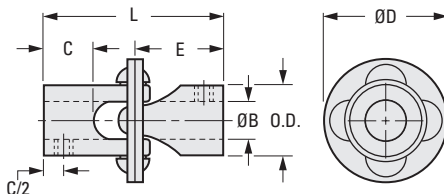
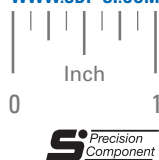
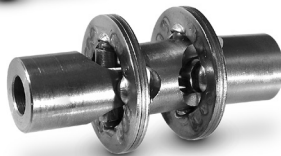


Fig. 1 Single Joint

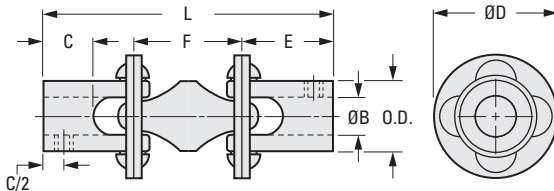


Fig. 2 Double Joint

These joints can be made into telescoping units by mating them with telescoping miniature ball splines:

S59PY5... pg. 4-24

S59PQ5... pg. 4-25

INCH COMPONENT

Catalog Number	O.D.	B Bore +.001 -.000	C Bore Depth	E End Unit	F Center	L Length	D Flange Dia.	Set Screws	Max. Torque at 0° ozf in.	Max. Oper. Speed at 0° rpm	Max. Angle Degrees
Fig. 1 Single Joint											
S57PY4-SFU0312	3/8	.1875	3/8	3/4		1-1/2	3/4	*	256	4000	20°
S57PY4-SFU0415	1/2	.2500	7/16	13/16		1-5/8	15/16		320		
S57PY4-SFU0622	3/4	.3750	5/8	1		2	1-3/8	1/4-20	480		
S57PY4-SFU0830	1	.5000	7/8	1-5/16		2-5/8	1-7/8		1200Δ		
Fig. 2 Double Joint											
S57PY4-DFU0312	3/8	.1875	3/8	3/4	5/8	2-1/8	3/4	*	256	4000	40°
S57PY4-DFU0415	1/2	.2500	7/16	13/16	25/32	2-13/32	15/16		320		
S57PY4-DFU0622	3/4	.3750	5/8	1	7/8	2-7/8	1-3/8	1/4-20	480		
S57PY4-DFU0830	1	.5000	7/8	1-5/16	1-1/4	3-7/8	1-7/8		1200Δ		

* Set screws available on special order.

Δ 4800 ozf in. torque rating available on special order.

Split hub ends and other bores also available on special order.

SHORT SERIES
STEP-DOWN SERIES

PHONE: 516.328.3300 • FAX: 516.326.8827 • WWW.SDP-SI.COM

> MATERIAL:

303 Stainless Steel

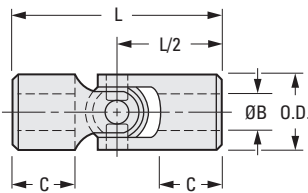
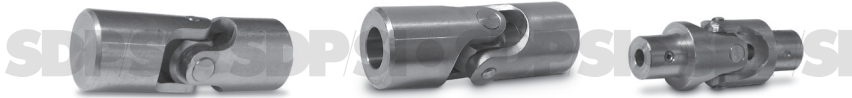


Fig. 1
Short Series

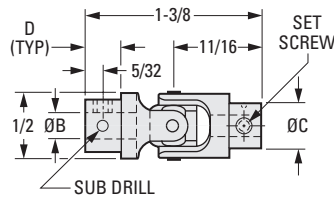


Fig. 2
Step-Down Series

INCH COMPONENT

Catalog Number	O.D.	B Bore +.001 -.000	C Bore Depth ± 1/32	L Overall Length	Max. Torque lbf in.	Approx. Weight lb.
Fig. 1 Short Series - Solid						
A 5Y 8-DM06	1/2	—	—	1.58	113	.06
A 5Y 8-DM08	5/8			1.97	217	.15
A 5Y 8-DM10	25/32			2.20	434	.28
A 5Y 8-DM12	63/64			2.80	694	.50
Fig. 1 Short Series - Bored						
A 5Y 8-DM0606	1/2	3/16	33/64	1.58	113	.04
A 5Y 8-DM0608		1/4				
A 5Y 8-DM0810	5/8	5/16	21/32	1.96	217	.13
A 5Y 8-DM1012	25/32	3/8	43/64	2.20	434	.20
A 5Y 8-DM1014		7/16				
A 5Y 8-DM1216	63/64	1/2	55/64	2.80	694	.40

Catalog Number	B Bore +.001 -.000	C Dia.	D	Set Screw	Sub Drill
Fig. 2 Step-Down Series					
A 5Y 8-DU104	.125	5/16	.312	#2-56	.029
A 5Y 8-DU206	.1875	3/8		#4-40	.040
A 5Y 8-DU308	.250	1/2	—	#6-32	.070

NOTE: Universal Joints will operate at angles up to 30°.



STANDARD DESIGN

PHONE: 516.328.3300 • FAX: 516.326.8827 • WWW.SDP-SI.COM

> MATERIAL:

Alloy Steel

> SPECIFICATIONS:

Max. Working Angle - Power Driven Applications: 25°
Hand Rotation Applications: 45°

Rating - Multiply design torque by correction factor obtained from following tables. Resulting number must be smaller than the breaking torque of the joint used.



Intermittent Running Conditions

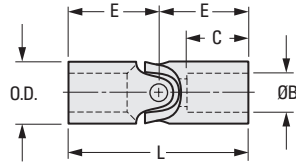
Speed rpm	Angle of Operation - Degrees									
	0	3	5	7	10	15	20	25	30	
1800	9	20	34	45	—	—	—	—	—	
1500	8	16	28	39	—	—	—	—	—	
1200	7	13	22	32	40	—	—	—	—	
900	6	11	16	23	34	—	—	—	—	
600	5	8	11	15	22	34	40	—	—	
300	4	5	7	8	11	16	22	28	34	
100	3	4	4	5	6	8	9	11	12	

Running under load for less than 15 minutes.

Continuous Running Conditions

Speed rpm	Angle of Operation - Degrees									
	0	3	5	7	10	15	20	25	30	
1800	18	40	68	90	—	—	—	—	—	
1500	16	32	55	78	—	—	—	—	—	
1200	14	26	44	64	80	—	—	—	—	
900	12	21	32	46	68	—	—	—	—	
600	10	15	22	30	44	68	80	—	—	
300	8	10	14	16	22	32	44	55	68	
100	6	7	8	10	12	15	18	22	24	

Running under load from 15 minutes to 8 hours.



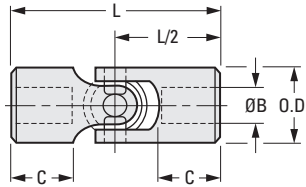
INCH COMPONENT

Catalog Number	O.D.	B Bore +.001 -.000	C Bore Depth ± 1/32	E	L Overall Length	Static Breaking Torque lbf in.	Approx. Weight lb.
Solid							
A 5Q 8-D100	3/8	—	—	7/8	1-3/4	110	.05
A 5Q 8-D200	1/2			1	2	378	.10
A 5Q 8-D300	5/8			1-1/8	2-1/4	540	.17
A 5Q 8-D400	3/4			1-11/32	2-11/16	768	.30
A 5Q 8-D500	7/8			1-1/2	3	1176	.45
Bored							
A 5Q 8-D106	3/8	.1875	9/16	7/8	1-3/4	110	.04
A 5Q 8-D108		.250					
A 5Q 8-D208	1/2	.250	5/8	1	2	378	.08
A 5Q 8-D210		.3125					
A 5Q 8-D212	5/8	.375	11/16	1-1/8	2-1/4	540	.15
A 5Q 8-D310		.3125					
A 5Q 8-D312		.375					
A 5Q 8-D314		.4375					
A 5Q 8-D316		.500					
A 5Q 8-D412	3/4	.375	7/8	1-11/32	2-11/16	768	.25
A 5Q 8-D414		.4375					
A 5Q 8-D416		.500					
A 5Q 8-D514	7/8	.4375	7/8	1-1/2	3	1176	.37
A 5Q 8-D516		.500					

> MATERIAL:

Alloy Steel

PHONE: 516.328.3300 • FAX: 516.326.8827 • WWW.SDP-SI.COM



INCH COMPONENT

Catalog Number	O.D.	B Bore +.001 -.000	C Bore Depth	L Overall Length	Approx. Weight oz.
Solid					
A 5Q 8-DM06	15/32	—	—	1-31/32	1.5
A 5Q 8-DM08	5/8			2-13/64	2.8
A 5Q 8-DM10	25/32			2-43/64	5.0
A 5Q 8-DM12	15/16			3-5/16	9.0
Bored					
A 5Q 8-DM0606	15/32	3/16	41/64	1-31/32	1.0
A 5Q 8-DM0608		1/4			
A 5Q 8-DM0810	5/8	5/16	11/16	2-13/64	2.3
A 5Q 8-DM1012	25/32	3/8	27/32	2-43/64	4.4
A 5Q 8-DM1014		7/16			
A 5Q 8-DM1216	15/16	1/2	1-1/16	3-5/16	7.1

- I
- R
- T
- 1
- 2
- 3
- 4
- 5
- 6
- 7**
- 8
- 9
- 10
- 11
- 12
- 13
- 14
- 15
- 16

TELESCOPING UNIVERSAL JOINTS



DOUBLE UNIVERSAL WITH BALL SPLINE
ZERO BACKLASH
ACCOMMODATES 1/4" AXIAL MOTION
LOW INERTIA

PHONE: 516.328.3300 • FAX: 516.326.8827 • WWW.SDP-SI.COM



> MATERIAL:

- Body - Fig. 1: 303 Stainless Steel
Fig. 2: 440 Stainless Steel
- Balls - Fig. 1 & 2: 440 Stainless Steel
- Ends and Flanges - Fig. 2: 300 Series Stainless Steel



> LUBRICATION:

Dry film plus oil suspension

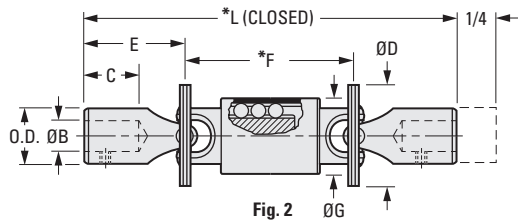
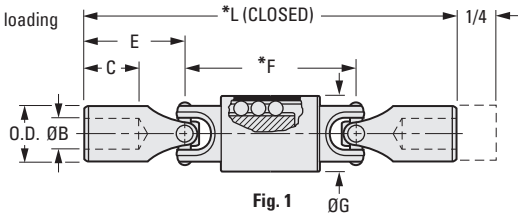
> FEATURES:

Zero backlash is attained with patented design and close dimensional control of components. Use where axial motion is present while transmitting rotary motion.

> SPECIFICATIONS:

- Torque Ratings:** For static conditions with in-line loading
- Max. Operating Speed at 0°** - Fig. 1: 10000 rpm
Fig. 2: 4000 rpm
- Max. Angle** - Fig. 1: 60° at 4000 rpm
Fig. 2: 40° at 1800 rpm

Angular relationship between tapped holes, where applicable, may vary freely. Also available on special order: Travel of up to 4" on Fig. 1 units and 6" on Fig. 2 units, telescoping single joints, split hub ends and other bores.



INCH COMPONENT										
Catalog Number	O.D.	B Bore +.001 -.000	C Bore Depth	E End Unit	F* Center Unit (Closed)	L (Closed)	D Flange Dia.	G Dia. Over Ball Race	Screw Size	Max. Torque at 0° ozf in.
Fig. 1 Miniature										
S57PY4-DUT0306	3/16	.0938	3/16	3/8	3/4	1-1/2	—	.31	Δ	16
S57PY5-DUT0406		.1250						.41		
S57PY5-DUT0609	9/32	.1875	9/32	9/16	15/16	2-1/16	—	.41	Δ	64
S57PY5-DUT0812	3/8	.2500	3/8	3/4	1-1/4	2-3/4	—	.56	Δ	256
**S57PY5-DUT0812T										
Fig. 2 Inverted										
S57PY4-DFUT0312	3/8	.1875	3/8	3/4	1-1/4	2-3/4	3/4	.56	Δ	256
S57PY4-DFUT0415	1/2	.2500	7/16		1-5/8	3	15/16	.56		320
S57PY4-DFUT0622	3/4	.3750	5/8	1	2-1/4	4-1/4	1-3/8	1.00	1/4-20	480
S57PY4-DFUT0830	1	.5000	7/8	1-5/16	2-1/2	5-1/8	1-7/8	1.50	1/4-20	§1200

* Closed dimensions for standard 1/4" of travel.
 ** 1-tapped hole, #6-32, 3/16" from each end. Two set screws installed.
 Δ Set screws available on special order.
 § 4800 ozf in. torque rating available on special order.



TELESCOPING UNIVERSAL JOINTS

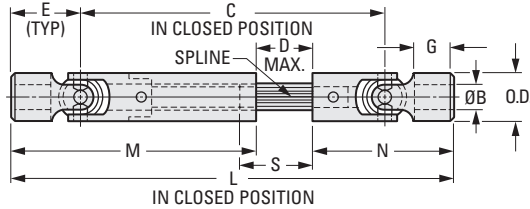
PHONE: 516.328.3300 • FAX: 516.326.8827 • WWW.SDP-SI.COM

HEAT-RESISTANT
CORROSION-RESISTANT

> MATERIAL:

Joints - 303 Series Stainless Steel
Spline - 416 Stainless Steel

> OPERATING TEMPERATURE:
0°F to +750°F



INCH COMPONENT

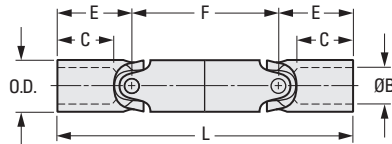
Catalog Number	O.D.	B Bore +.001 -.000	E	M	N	L Closed	C Closed	D Max.	Max. Torque lbf. in.	S	G
A 5X 8-SE1608	1/2	.250	.79	3.83	1.58	5.41	3.83	1-5/8	40	2-1/4	33/64
A 5X 8-SE2012	5/8	.375	.98	4.96	1.96	6.92	4.96	2-1/4	95	3	21/32
A 5X 8-SE2514	25/32	.4375	1.10	5.95	2.20	8.15	5.95	2-7/8	240	3-3/4	43/64
A 5X 8-SE3216	1	.500	1.40	7.30	2.80	10.10	7.30	3-1/4	600	4-1/2	55/64
A 5X 8-SE3220		.625									

NOTE: Total open length = L (Closed) + D (Max).

UNIVERSAL JOINTS

DOUBLE JOINT
HAND-OPERATED & POWER DRIVEN
1750 rpm OR LESS

> MATERIAL:
Alloy Steel



INCH COMPONENT

Catalog Number	O.D.	B Bore +.001 -.000	C Bore Depth ± 1/32	L Overall Length	E	F	Approx. Weight lb.
Solid							
A 5Q 8-DD100	3/8	—	—	3-1/2	7/8	1-3/4	.09
A 5Q 8-DD200	1/2			4	1	2	.18
A 5Q 8-DD300	5/8			4-1/2	1-1/8	2-1/4	.32
A 5Q 8-DD400	3/4			5-3/8	1-11/32	2-11/16	.55
A 5Q 8-DD500	7/8			6	1-1/2	3	.82
A 5Q 8-DD600	1			6-3/4	1-11/16	3-3/8	1.20
Bored							
A 5Q 8-DD106	3/8	.1875	9/16	3-1/2	7/8	1-3/4	.08
A 5Q 8-DD208	1/2	.250	5/8	4	1	2	.16
A 5Q 8-DD310	5/8	.3125	11/16	4-1/2	1-1/8	2-1/4	.30
A 5Q 8-DD412	3/4	.375	7/8	5-3/8	1-11/32	2-11/16	.50
A 5Q 8-DD514	7/8	.4375	7/8	6	1-1/2	3	.74
A 5Q 8-DD616	1	.500	1	6-3/4	1-11/16	3-3/8	1.05

7-10
D820

I
R
T
1
2
3
4
5
6
7
8
9
10
11
12
13
14
15
16

Stock Drive Products pioneered the concept of combining the exceptional qualities of selected plastic materials with different metals to create products which incorporate both.



SUPER-PLAST® designs have the following advantages:

1. Inexpensive replacement of metal components, particularly for low torque applications.
2. As vibration dampers due to the resiliency of plastics used.
3. For drives used in corrosive environments or for chemical processing equipment.
4. For drives which have to be electrically insulated.
5. For domestic appliances and other intermittent duty applications.

The SDP line of molded universal joints is a valuable extension of the above capabilities, and they are shown on the following pages:

Name	Description	Series	Page
Universal Single Joint	All Molded	A 5M 8-D...	7-12
	Metal Spider (No Insert)	A 5T 8-D...	7-13
	Metal Spider and Insert	A 5Z 8-D...	7-13
Universal Double Joint	All Molded	A 5M 8-DD...	7-12
	Metal Spider (No Insert)	A 5T 8-DD...	7-14
	Metal Spider and Insert	A 5Z 8-DD...	7-14
Universal Joint With Molded Slide Extension	All Molded	A 5M 8-SE...	7-15
	Metal Spider (No Insert)	A 5T 8-SE...	7-16, 7-17
	Metal Spider and Insert	A 5Z 8-SE...	7-16, 7-17
Universal Joint With Brass Slide Extension	Metal Spider and Insert	A 5Z 8-SEB...	7-18

The above products are available from stock in standard configurations as presented in the catalog pages. They can also be manufactured to special requirements, with partial modification of existing tools. These "specials" can consist of:

- a) Bores molded to accommodate square, "D" shape or hexagonal shafts.
- b) Shafts molded into the components themselves.
- c) Zero backlash or components with built-in backlash.
- d) Gears, pulleys or other components molded or assembled to couplings or universal joints.

Please consult SDP Application Engineering for further details.

MOLDED UNIVERSAL JOINTS



SINGLE & DOUBLE JOINTS
ECONOMY SERIES

PHONE: 516.328.3300 • FAX: 516.326.8827 • WWW.SDP-SI.COM



► **MATERIAL:**
Body & Spider - Molded Acetal



► **MAX. OPERATING TEMPERATURE:**
180°F

► **SPECIFICATIONS:**
Max. Angular Displacement - Fig. 1: 45°
Fig. 2: 90°

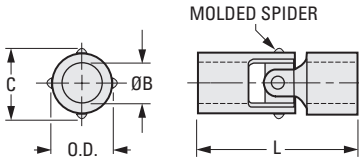


Fig. 1 Single Joint

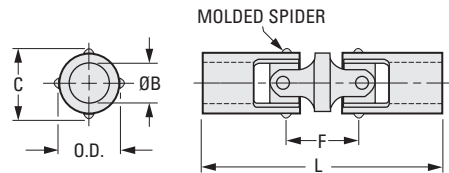


Fig. 2 Double Joint

INCH COMPONENT

Catalog Number	O.D.	B Bore +0.000 -0.002	Bore Depth (Typ)	L Overall Length	C	F	Max. Torque lbf in.	Max. Parallel Offset
Fig. 1 Single Joint								
A 5M 8-D204	1/4	1/8	.23	3/4	.26		1.9	
A 5M 8-D206		3/16						
A 5M 8-D306	3/8	1/4	.34	1-1/8	.42		8.0	
A 5M 8-D308		3/16						
A 5M 8-D406	1/2	1/4	.42	1-25/64	.54	—	18.0	—
A 5M 8-D408		5/16						
A 5M 8-D410	5/8	1/4	.58	2-5/64	.65		37.0	
A 5M 8-D508		5/16						
A 5M 8-D510		3/8						
A 5M 8-D512		7/16						
A 5M 8-D514								
Fig. 2 Double Joint								
A 5M 8-DD204	1/4	1/8	.23	1-1/16	.26	5/16	1.7	.22
A 5M 8-DD206		3/16						
A 5M 8-DD306	3/8	1/4	.34	1-41/64	.42	17/32	6.0	.36
A 5M 8-DD308		3/16						
A 5M 8-DD406	1/2	1/4	.42	2-1/64	.54	5/8	11.0	.43
A 5M 8-DD408		5/16						
A 5M 8-DD410	5/8	1/4	.58	2-61/64	.65	7/8	32.0	.61
A 5M 8-DD508		5/16						
A 5M 8-DD510		3/8						
A 5M 8-DD512		7/16						
A 5M 8-DD514								

ELECTRICALLY INSULATING

PHONE: 516.328.3300 • FAX: 516.326.8827 • WWW.SDP-SI.COM

> MATERIAL:

Body - Molded Acetal
Spider & Insert - Nickel Plated Brass

> MAX. OPERATING TEMPERATURE:

180°F

> SPECIFICATIONS:

Max. Angular Displacement: 45°

B Bore Tolerance:
Fig. 1 Plain: +.000/-0.002
Fig. 2 With Insert: +.001/-0.000



SDPSI • SDPSI • SDPSI

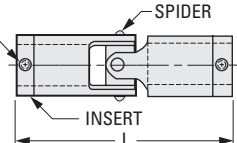
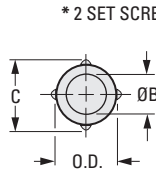
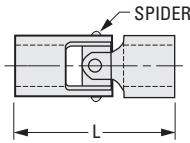
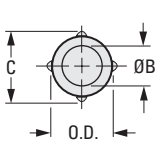


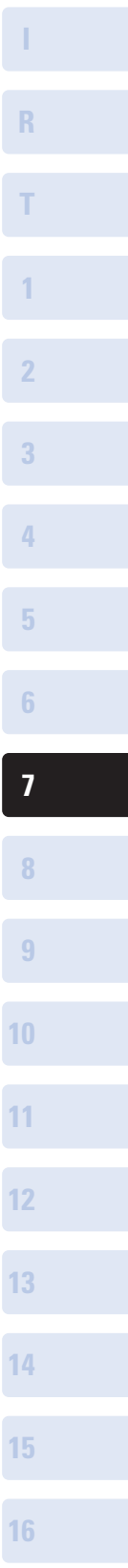
Fig. 1 Plain

Fig. 2 With Insert

INCH COMPONENT

Catalog Number	O.D.	B Bore	Bore Depth (Typ)	L Overall Length	C	Set Screw	Max. Torque lbf in.
Fig. 1 Plain							
A 5T 8-D204	1/4	1/8	.23	3/4	.27		5
A 5T 8-D206		3/16					
A 5T 8-D306	3/8	1/4	.34	1-1/8	.41		16
A 5T 8-D308		3/16					
A 5T 8-D408	1/2	1/4	.42	1-25/64	.54	—	26
A 5T 8-D410		5/16					
A 5T 8-D508	5/8	1/4	.58	2-5/64	.68		60
A 5T 8-D510		5/16					
A 5T 8-D512		3/8					
A 5T 8-D514		7/16					
Fig. 2 With Insert							
A 5Z 8-D204	1/4	*1/8	.39	1-3/64	.27	#4-40	5
A 5Z 8-D304	3/8		.52		1-9/20		.41
A 5Z 8-D306	1/2	3/16	.63			.54	#6-32
A 5Z 8-D406		1/4					
A 5Z 8-D508	5/8	5/16	.86	2-41/64	.68	#8-32	60
A 5Z 8-D510							
A 5Z 8-D512							

* One set screw each end.



ELECTRICALLY INSULATING

PHONE: 516.328.3300 • FAX: 516.326.8827 • WWW.SDP-SI.COM

► **MATERIAL:**

Body - Molded Acetal
Spider & Insert - Nickel Plated Brass

► **MAX. OPERATING TEMPERATURE:**

180°F

► **SPECIFICATIONS:**

Max. Angular Displacement: 90°

B Bore Tolerance:

Fig. 1 Plain: +.000/-0.002

Fig. 2 With Insert: +.001/-0.000

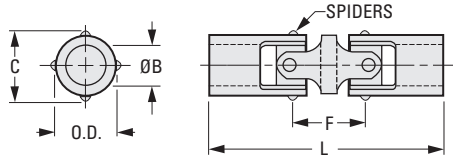
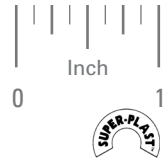


Fig. 1 Plain

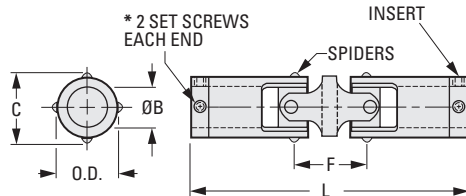


Fig. 2 With Insert

INCH COMPONENT

Catalog Number	O.D.	B Bore	Bore Depth (Typ)	L Overall Length	C	F	Set Screw	Max. Torque lbf in.	Max. Parallel Offset
Fig. 1 Plain									
A 5T 8-DD204	1/4	1/8	.23	1-1/16	.27	5/16	—	2.5	.22
A 5T 8-DD206		3/16							
A 5T 8-DD306	3/8	3/16	.34	1-41/64	.41	17/32	—	7.0	.36
A 5T 8-DD308		1/4							
A 5T 8-DD406	1/2	3/16	.42	2-1/64	.54	5/8	—	12.0	.43
A 5T 8-DD408		1/4							
A 5T 8-DD410		5/16							
A 5T 8-DD508	5/8	1/4	.58	2-61/64	.68	7/8	—	47.0	.61
A 5T 8-DD510		5/16							
A 5T 8-DD512		3/8							
A 5T 8-DD514		7/16							
Fig. 2 With Insert									
A 5Z 8-DD204	1/4	*1/8	.39	1-23/64	.27	5/16	#4-40	2.5	.22
A 5Z 8-DD304	3/8	*1/8	.52	2	.41	17/32	#4-40	7.0	.36
A 5Z 8-DD306		3/16							
A 5Z 8-DD406	1/2	3/16	.63	2-7/16	.54	5/8	#6-32	12.0	.43
A 5Z 8-DD408		1/4							
A 5Z 8-DD508	5/8	1/4	.86	3-33/64	.68	7/8	#8-32	47.0	.61
A 5Z 8-DD510		5/16							
A 5Z 8-DD512		3/8							

* One set screw each end.

MOLDED UNIVERSAL JOINTS



WITH MOLDED SLIDE EXTENSION
ECONOMY SERIES

PHONE: 516.328.3300 • FAX: 516.326.8827 • WWW.SDP-SI.COM



> MATERIAL:

Body & Spider - Molded Acetal

> MAX. OPERATING TEMPERATURE:

180°F

> SPECIFICATIONS:

Max. Angular Displacement: 90°

*Max. Recommended Extension: 3/4

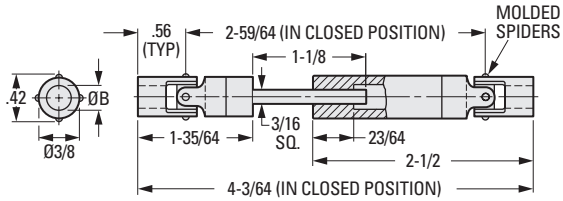


Fig. 1

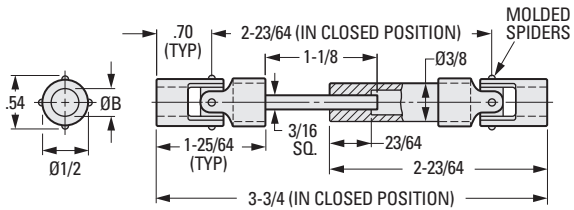


Fig. 2

INCH COMPONENT

Catalog Number	B Bore +.000 -.002	Bore Depth (Typ)	Max. Recommended Torque lbf in.	
			Closed	Open*
Fig. 1				
A 5M 8-SE306	3/16	.34	6	5
A 5M 8-SE308	1/4			
Fig. 2				
A 5M 8-SE406	3/16	.42	12	10
A 5M 8-SE408	1/4			
A 5M 8-SE410	5/16			

MOLDED UNIVERSAL JOINTS



WITH MOLDED SLIDE EXTENSION
PLAIN OR WITH INSERT
3/8 O.D.

PHONE: 516.328.3300 • FAX: 516.326.8827 • WWW.SDP-SI.COM



> MATERIAL:

Body - Molded Acetal
Spider & Insert - Nickel Plated Brass



> MAX. OPERATING TEMPERATURE:

180°F



> SPECIFICATIONS:

Max. Angular Displacement: 90°
ΔMax. Recommended Extension: 3/4

B Bore Tolerance:

Fig. 1 Plain: +.000/- .002

Fig. 2 With Insert: +.001/- .000

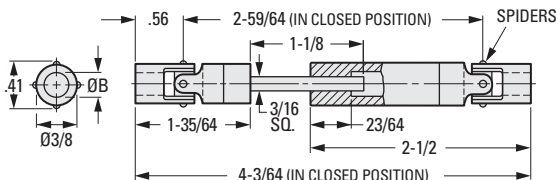
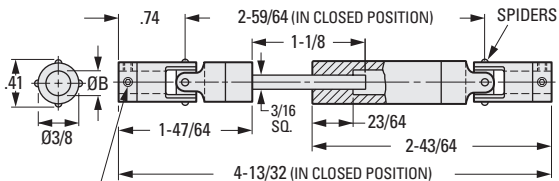


Fig. 1 Plain



* 2 SET SCREWS EACH END

Fig. 2 With Insert

INCH COMPONENT

Catalog Number	B Bore	Bore Depth (Typ)	Set Screw	Max. Recommended Torque lbf in.	
				Closed	Open ^Δ
Fig. 1 Plain					
A 5T 8-SE306	3/16	.34	—	8	5
A 5T 8-SE308	1/4				
Fig. 2 With Insert					
A 5Z 8-SE304	*1/8	.52	#4-40	8	5
A 5Z 8-SE306	3/16				

* One set screw each end.

WITH MOLDED SLIDE EXTENSION
PLAIN OR WITH INSERT
1/2 O.D.

PHONE: 516.328.3300 • FAX: 516.326.8827 • WWW.SDP-SI.COM



> MATERIAL:

Body - Molded Acetal
Spider & Insert - Nickel Plated Brass

> MAX. OPERATING TEMPERATURE:

180°F

> SPECIFICATIONS:

Max. Angular Displacement: 90°

Δ Max. Recommended Extension: 3/4 in.

B Bore Tolerance:

Fig. 1 Plain: +.000/-.002

Fig. 2 With Insert: +.001/-.000

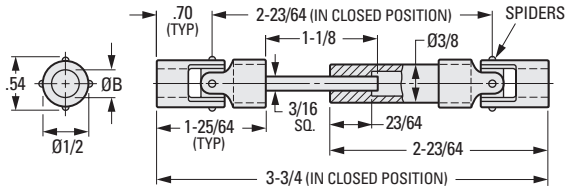


Fig. 1 Plain

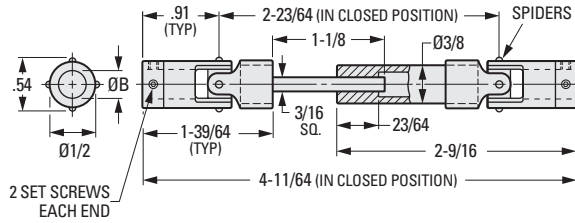


Fig. 2 With Insert

INCH COMPONENT

Catalog Number	B Bore	Bore Depth (Typ)	Set Screw	Max. Recommended Torque lbf in.	
				Closed	Open ^Δ
Fig. 1 Plain					
A 5T 8-SE406	3/16	.42	—	14	10
A 5T 8-SE408	1/4				
A 5T 8-SE410	5/16				
Fig. 2 With Insert					
A 5Z 8-SE406	3/16	.63	#6-32	14	10
A 5Z 8-SE408	1/4				

MOLDED UNIVERSAL JOINTS • TELESCOPING



WITH BRASS SLIDE EXTENSION
ELECTRICALLY INSULATING

PHONE: 516.328.3300 • FAX: 516.326.8827 • WWW.SDP-SI.COM



> MATERIAL:

- Body - Molded Acetal
- Spider & Insert - Nickel Plated Brass
- Tube - Brass

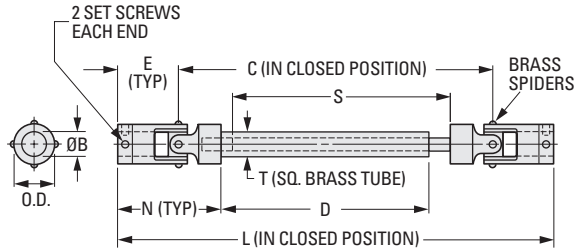
> MAX. OPERATING TEMPERATURE:

180°F

> SPECIFICATIONS:

- Max. Angular Displacement: 90°
- Max. Recommended Extension: D/2

Shorter or longer lengths available on special order.



INCH COMPONENT

Catalog Number ^Δ	O.D.	B Bore +.001 -.000	Bore Depth (Typ)	E	F	N
A 5Z 8-SEB304	3/8	*1/8	.52	3/4	.41	1-5/16
A 5Z 8-SEB508	5/8	1/4	.86	1-21/64	.68	2-3/8
A 5Z 8-SEB510		5/16				
A 5Z 8-SEB512		3/8				

* One set screw each end.

Δ To be discontinued when current stock is depleted.

Catalog Number (Ref.)	Length Closed		D	S	T Square	Set Screw
	L	C				
A 5Z 8-SEB304	4-7/16	2-15/16	1-13/16	2-3/32	5/32	#4-40
A 5Z 8-SEB508	8	5-11/32	3-1/4	3-25/32	1/4	#8-32
A 5Z 8-SEB510						
A 5Z 8-SEB512						

NOTE: Total open length = L (Closed) + D/2 (Max).

