

PART NUMBER INDEXxiii

REFERENCE SECTION

Selecting a Preferred SizeR-0
 Preferred Tolerances in MetricR-1
 ISO-Metric Tolerance ChartsR-2
 ISO-Metric Primary FitsR-4
 Ball Bearing Precision Classes & FitsR-6
 Metric Gears — Precision Classes & Preferred SizesR-7
 Diametral Pitch to Metric Gear EquivalenceR-8
 Configuration of Different Timing BeltsR-10
 Characteristics of Belt Tension Member MaterialsR-11
 Allowable Working Tension of Timing BeltsR-12
 Timing Pulley DataR-13
 Fractional & Decimal Inch & Metric EquivalentsR-14
 Miscellaneous Conversion FactorsR-15

TECHNICAL SECTION

Elements of Metric Gear TechnologyT-0

PRODUCT SECTIONS

1 - Gears1-1	9 - Linear Motion • Lead Screws9-1
2 - Belt and Chain Drives2-0	10 - Hardware10-0
3 - Shafting3-1	11 - Gearheads and Speed Reducers11-1
4 - Shaft Accessories4-1	12 - Right Angle Drives12-0
5 - Bearings5-1	13 - Clutches and Brakes13-1
6 - Couplings6-0	14 - Miscellaneous Components14-0
7 - Universal Joints7-1	
8 - Vibration and Shock Mounts8-1	

ALPHABETICAL INDEXA-1



Stock Drive Products/Sterling Instrument, ISO 9001 + AS9100 Registered

250 Duffy Avenue, Hicksville, New York 11801

Phone: (516) 328-3300 | **Fax:** (516) 326-8827 | FOR ORDERS ONLY, FAX: (800) 345-1144

Email: sdp-sisupport@sdp-si.com | www.sdp-si.com

NOTE: We reserve the right to make changes and corrections without notice. Every effort has been made to provide accurate technical and product information. The company disclaims responsibility for any error or omission regarding technical and product information published.

© 2019 **Stock Drive Products/Sterling Instrument**, a **Designatronics** company

All rights reserved herein and no portion of this catalog may be reproduced without the prior consent in writing of the company.

R
T
1
2
3
4
5
6
7
8
9
10
11
12
13
14
A
Looking for a Specific Part or Product Category

Products are organized into sections of related items. There are 14 sections in this catalog. Each section starts with a pictorial index, which includes part numbers and brief descriptions. Extensive part number and alphabetical indexes are included.

Do You Have a Technical Question?

If you have technical questions regarding our products or cannot find a component in our catalog which meets your particular specifications, call our Applications Engineers. Our engineers can assist with product selection and offer design solutions, including simple modifications to complex custom designs.

We Welcome Your Requests for Custom Components and Assemblies

SDP/SI designs and manufactures custom mechanical components and assemblies for motion control and small power transmission applications. Our components are used in a wide variety of product applications worldwide including aerospace, defense, military and commercial aircraft, robotics, and medical.

- Timing Belts and Pulleys
- Precision Gears
- Precision Gearboxes
- Precision Machined Components
- Molded Components
- Mechanical Assemblies
- Contract Manufacturing
- ISO 9001 + AS9100 Certified

For a free design consultation or technical assistance,

Call our engineering department: (516) 328-3300

Fill out the form: <http://www.sdp-si.com/contact/tech.php>

Request a Quote: <http://sdp-si.com/contact/quote.php>

Ask About Our Quantity Discounts and Place an Order**Contact Customer Service**

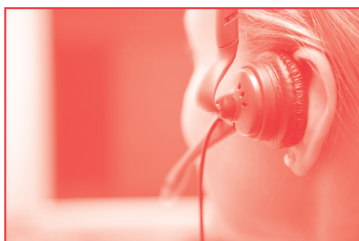
Phone: (516) 328-3300

FAX: (516) 326-8827

FAX an Order: (800) 345-1144

Email: sdp-sisupport@sdp-si.com

RFQ – Request for Quote: <http://sdp-si.com/contact/quote.php>



CELEBRATING 70 YEARS OF EXCELLENCE

1950 - 2020

A trusted specialist in engineering development and manufacturing

Established 1950, Stock Drive Products/Sterling Instrument (SDP/SI) is a trusted specialist in engineering development and manufacturing of custom motion control solutions for medical, aerospace, defense and robotics. Applying years of experience, product knowledge, and design acumen our engineering and manufacturing teams provide innovative solutions through part selection, modification, or custom design. Sometimes the best solution is the simplest. Standard components are a cost-effective option and with 87,000 inch and metric, machined and molded components offered, SDP/SI is the engineers preferred source.

Partnering with OEMs around the world.

Our precision gears, high-quality machined parts, molded components, and complex drive assemblies can be found in high-tech operating rooms, movie sets, military operations, space exploration, and even on Mars. Partnering with OEMs around the world we manufacture and manage supply chain of components required for surgical robotics, aviation, satellites, defense, automation, and commercial industries.

We meet the highest-quality standards.

Completed December 2016, our 96,000 square foot state-of-the-art Hicksville, NY facility houses the latest manufacturing, industrial automation, and inspection equipment. Employing skilled machinists, CNC programmers, inspectors, engineers, and customer

service personnel, we meet the highest-quality standards your business deserves.

Our manufacturing capabilities include precision gear cutting, 5-axis milling, 9-axis Swiss turning, and world class quality. Custom material and finish options are available. For prototypes to large scale production, see what SDP/SI can do for you. ISO 9001:2015 + AS9100D certified, ITAR, Reach, and RoHS compliant.

SDP/SI is an award winning company located on Long Island, New York.



Photo by: Josh Goetz Photography



Photo by: Josh Goetz Photography



Designatronics, Inc. and associated brands, Stock Drive Products / Sterling Instrument, QTC Metric Gears, and Quality Bearings & Components.

As used herein, “**Seller**” means Designatronics and its brands, “**Buyer**” means any person ordering goods from Seller after November 24, 2014, and “**person**” means any individual, corporation, company or other entity.

ORDERING

CALL: (516) 328-3300 between 9:00 AM and 5:00 PM, Eastern Time

CALL TOLL FREE: (800) 819-8900

FAX FOR ORDERS ONLY: (800) 345-1144

EMAIL: sdp-sisupport@sdp-si.com

ORDER ONLINE: <https://shop.sdp-si.com/catalog/>

When ordering, specify part numbers, quantities, desired delivery date and shipping method. For larger production quantities, Seller will provide written quote of price and delivery on request. Seller will provide current price/stock status on any catalog item by telephone or e-mail request. Quotes for modified catalog parts or custom-made parts are available on request. Please send sketches or prints.

MINIMUM ORDER

Our minimum purchase price is \$50.00 before tax and shipping. The difference of this \$50.00 charge will be added to your subtotal balance to meet the \$50.00 minimum.

PRICES

Prices shall be as in effect at time of purchase order or as agreed to in writing by Seller. Prices listed in its catalog or elsewhere are subject to change without notice. Please contact Seller to confirm price. Prices do not include freight, duties, special handling, certification, insurance or taxes, which are all Buyer’s responsibility.

CREDIT

Bank and 3 trade references are required for new accounts. Until account is approved, Seller may require cash in advance, payment by approved credit card.

TERMS

For open accounts, terms are net 30 days, F.O.B. our plant. Open accounts are invoiced for goods/freight when shipped. Seller accepts VISA®, MasterCard®, and American Express®. Buyers paying by credit card are charged for goods/freight when shipped, subject to credit card approval.

SHIPMENT; RISK OF LOSS

Seller will ship goods as directed by Buyer or determined by Seller, usually UPS, DHL, FedEx, in any case at Buyer’s cost. Seller will endeavor to meet promised delivery dates. Buyer shall bear all risk of loss and damage after goods are delivered to carrier, including any loss or damage in transit.

RETURNS; EXCHANGES; SHORTAGES

All returns and exchanges require prior written authorization from the Seller. Requests must be submitted within 15 days of receiving the goods. Returned items will be inspected, and a restocking fee of 25% will apply. No credit will be issued for custom-made, used, or modified parts, or for parts purchased on a quantity basis. Shortages must be reported within 10 days of receipt. If reported within this period, the Seller will make up the shortage at its cost.

TECHNICAL AND PRODUCT INFORMATION

Seller disclaims responsibility for errors or omissions in any technical or product information contained in its catalogs or other sales materials. Buyer is solely responsible for determining if goods are suitable for purposes intended by Buyer and its customers and future users.

ORDER CANCELLATION

If you need to cancel or revise an order before it has shipped, Designatronics will review the order to determine any applicable charges. For orders consisting entirely of standard stock items that are already assembled and ready to ship, a minimum 25% restocking fee will apply. Orders that include non-stock, custom-made, modified, or quantity-based items are considered final and cannot be canceled. In these cases, no refunds will be issued.

LIMITED WARRANTY

Seller warrants that all goods it sells will be free from material defects in manufacturing and workmanship by Seller: **PROVIDED THIS LIMITED WARRANTY SHALL EXPIRE ONE (1) YEAR AFTER SHIPMENT F.O.B. OUR PLANT (the "Warranty Period") AND SHALL NOT APPLY:**

- (a) unless Seller receives written notice of the breach of warranty within 30 days after discovery of the defect or non-conformance and in any event within the one (1) year Warranty Period; and
- (b) to any goods which have been (i) repaired, altered or improperly installed, (ii) subject to improper storage, (iii) damaged during or after transit, (iv) used or incorporated with or into any other product, machine or equipment after Buyer or anyone using the goods has, or reasonably should have, knowledge or the defect or non-conformance, or (v) manufactured, fabricated to assembled by anyone other than Seller.

ALL OTHER WARRANTIES, EXPRESSED OR IMPLIED, INCLUDING IMPLIED WARRANTIES OF MERCHANTABILITY AND FITNESS FOR PARTICULAR PURPOSE, ARE DISCLAIMED.

BUYER'S REMEDIES

At Seller's option, if it breaches the warranty set forth above, it may either (a) repair or replace defective or non-conforming goods or parts or (b) repay the price it received for goods, whichever it elects. As a condition precedent to either remedy, Buyer shall have paid the price of the goods and made them available for inspection at Buyer's place or business or returned them at Seller's request and cost and by the carrier it designates. **BUYER SHALL HAVE NO OTHER REMEDY AGAINST SELLER, AND ALL OTHER REMEDIES ARE WAIVED, INCLUDING ANY RIGHT TO RECOVER CONSEQUENTIAL OR INCIDENTAL DAMAGES.** The limited warranty set forth above and these remedies shall extend only to Buyer and not to any subsequent buyer or user of the goods. In no event shall Seller's liability for breach exceed the price paid for by the goods by Buyer.

GOVERNING LAW; EXCLUSIVE JURISDICTION

This contract shall be governed by the substantive laws of New York, without regard to choice of law principles. **The State and Federal courts in Nassau County, New York, shall have the exclusive jurisdiction and venue to adjudicate rights and duties under this contract.**

PERIOD OF LIMITATIONS

An action for breach of this contract, including breach of the limited warranty set forth above, or any other action relating to goods shipped by Seller or ordered by Buyer, must be commenced within one (1) year after the cause of action accrued.

MISCELLANEOUS

All orders placed with Seller after August 12, 2025 constitute acceptance of these Terms and Conditions. All conflicting, inconsistent and additional terms and conditions are rejected unless contained in writing and signed by an officer of Seller. Buyer may not assign any rights or remedies under this contract without Seller's prior written consent. If any part or provision of these Terms and Conditions is held to be invalid or unenforceable, such part or provision shall be deemed omitted, and that shall not affect the validity or enforceability of any other part or provision hereof.

Please check www.sdp-si.com for any updates.

ENGINEERING CAPABILITIES

Design | Reverse Engineering | Product Development | Applications

MANUFACTURING CAPABILITIES

Turning: .25" - 6.0" OD

Milling: maximum 12" x 20"

Gear Cutting:

Gears and Racks:

Inch: 16 DP to 200 DP (2.0 m to 0.2 m)

Max. O.D.: 8" (200 mm)

Min. O.D.: 1/4" (6 mm)

Worms and Worm Wheels: 16 DP to 72 DP

Gear Tolerances:

Molded Gears: to AGMA 5

Hobbed or Ground Gears: to AGMA 14 (ISO 4)

Shafts:

Diameter: .03125" - 1.500"

Straightness: up to .0003"

Length: maximum 12'

Available Materials (abridged):

Acetal	Nylon
Aluminum	Alloy Steel
Brass	Stainless Steel
Bronze	Titanium
Inconel	

Compliances and Practices:

ISO 9001 + AS9100 Certified
 ITAR Compliant – DDTIC Registered
 RoHS Compliant
 R.E.A.C.H. Compliant

**High-Volume Manufacturing Facility
 Over 170 Machines**

CNC Swiss Turning

Multiple Spindle
 9-Axis

CNC Lathe (Mill-Turn)

Multiple Spindle
 5-Axis

CNC Milling & Machining Centers

4- & 5-Axis
 With Automation

Gear Cutting

CNC Bevel
 CNC Hobbing
 CNC Shaping
 Coniflex Bevel Gear Generators
 Rack Cutting

Fully Equipped Tool Room

Grinding Department
 Deburring Department

ISO 7 Class 10000 Clean Room

3D Printing



For a free design consultation, call
516-328-3300
 and speak to one of our engineers.

A 1A 4MY.....1-148	A 1B66MYK15....1-165	A 1C 6MYK15.....1-164
A 1A12MHR.....1-143	A 1C 1MYK10....1-67	A 1C 6MYK20.....1-173
A 1B 1MY04.....1-23	A 1C 1MYK15....1-78	A 1C 6MYK30....1-173
A 1B 1MY05.....1-24	A 1C 1MYK20....1-83	A 1C 7MYK.....1-132
A 1B 1MY08.....1-25	A 1C 1MYKW10...1-68	A 1C 8M.....1-22
A 1B 1MYK05....1-41	A 1C 2MY04.....1-30	A 1C 8MYK15....1-72
A 1B 1MYKH7....1-47	A 1C 2MY05.....1-39	A 1C 8MYK20....1-79
A 1B 2MY03.....1-29	A 1C 2MY08.....1-51	A 1C 8MYK25....1-85
A 1B 2MY04.....1-30	A 1C 2MY10....1-59	A 1C 8MYKW25...1-85
A 1B 2MY05.....1-39	A 1C 2MYK05....1-40	A 1C10MYK10.....1-132
A 1B 2MY08.....1-51	A 1C 2MYK075...1-45	A 1C12MY04.....1-136
A 1B 2MY10.....1-59	A 1C 2MYK10....1-60	A 1C12MY05.....1-136
A 1B 2MYK05....1-37	A 1C 2MYK15....1-73	A 1C12MY08.....1-137
A 1B 2MYK08....1-52	A 1C 2MYK20....1-80	A 1C12MY10.....1-137
A 1B 2MYKH7....1-46	A 1C 2MYK25....1-86	A 1C12MYHC.....1-142
A 1B 3MYK.....1-152	A 1C 2MYK30....1-91	A 1C12MYK.....1-135
A 1B 4MY.....1-148	A 1C 2MYKW10...1-61	A 1C12MYK.....1-138
A 1B 4MYK.....1-145	A 1C 2MYKW15...1-72	A 1C22MYK15....1-73
A 1B 6MWH05...1-157	A 1C 2MYKW20...1-79	A 1C22MYK20....1-80
A 1B 6MWH08...1-158	A 1C 2MYKW30...1-90	A 1C22MYK30....1-91
A 1B 6MWH10...1-160	A 1C 2MYKX10...1-61	A 1C22MYKW15...1-76
A 1B 6MWK10...1-162	A 1C 3MYK.....1-152	A 1C22MYKW20...1-81
A 1B 6MWK15...1-165	A 1C 4MY.....1-148	A 1C22MYKW25...1-87
A 1B 6MWK20...1-168	A 1C 4MYK.....1-145	A 1C25M.....1-176
A 1B 6MWK25...1-170	A 1C 5MWH.....1-166	A 1C25MH.....1-177
A 1B 6MWK30...1-172	A 1C 5MWH05....1-157	A 1C26M.....1-176
A 1B 6MYH05....1-157	A 1C 5MWH08....1-158	A 1C26MH.....1-177
A 1B 6MYH08....1-158	A 1C 5MWH10....1-160	A 1C29MY.....1-26
A 1B 6MYH10....1-160	A 1C 5MWK10....1-161	A 1C33MYK.....1-152
A 1B 6MYK10....1-162	A 1C 5MWK15...1-164	A 1C44MYK.....1-145
A 1B 6MYK15....1-165	A 1C 5MWK20....1-167	A 1D 4MYZ.....1-150
A 1B 6MYK20....1-168	A 1C 5MWK25....1-169	A 1D 5MYZ.....1-163
A 1B 6MYK25....1-170	A 1C 5MWK30....1-171	A 1M 2MYH05....1-101
A 1B 6MYK30....1-172	A 1C 5MYH.....1-166	A 1M 2MYH08....1-107
A 1B 8M.....1-21	A 1C 5MYH05....1-157	A 1M 2MYH10....1-114
A 1B 9MY0.....1-28	A 1C 5MYH08....1-158	A 1M 2MYHF.....1-143
A 1B12MY04.....1-136	A 1C 5MYH10....1-160	A 1M 2MYZ05....1-99
A 1B12MY05.....1-136	A 1C 5MYK10....1-161	A 1M 2MYZ07....1-103
A 1B12MY08.....1-137	A 1C 5MYK15....1-164	A 1M 2MYZ10....1-115
A 1B12MY10.....1-137	A 1C 5MYK20....1-167	A 1M 2MYZ12....1-119
A 1B12MYK.....1-135	A 1C 5MYK25....1-169	A 1M 2MYZ15....1-122
A 1B26M.....1-176	A 1C 5MYK30....1-171	A 1M 2MYZ20....1-125
A 1B66MWK10...1-162	A 1C 6MWK15...1-164	A 1M 2MYZ30....1-130
A 1B66MWK15...1-165	A 1C 6MWK20....1-173	A 1M 3MYH.....1-153
A 1B66MYK10....1-162	A 1C 6MWK30....1-173	A 1M 3MYZ.....1-153

R

T

1

2

3

4

5

6

7

8

9

10

11

12

13

14

A

R

A 1M 4MYH.....1-149

A 1M 4MYZ.....1-149

T

A 1M 6MYZ.....1-163

A 1M12MHR.....1-143

A 1M12MYH.....1-139

A 1M12MYHF.....1-142

A 1M12MYP.....1-139

2

A 1M12MYZ.....1-139

A 1M33MYZ.....1-154

A 1P 1MYH20...1-126

A 1P 1MYH25...1-128

3

A 1P 1MYH30...1-131

A 1P 2MY04.....1-95

4

A 1P 2MYD04...1-94

A 1P 2MYD08...1-106

A 1P 2MYH10...1-117

5

A 1P 2MYH15...1-121

A 1P 2MYH20...1-124

A 1P 2MYH25...1-127

6

A 1P 2MYH30...1-129

A 1P 6MWH.....1-166

A 1P 6MWK15...1-164

7

A 1P 6MYH.....1-166

A 1P 6MYK08...1-159

8

A 1P 6MYK15...1-164

A 1P12MY04.....1-136

A 1P12MY05.....1-136

9

A 1P12MY08.....1-137

A 1P12MY10.....1-137

A 1X 2MYK05...1-40

10

A 1X 2MYK075...1-45

A 1X 4MY.....1-148

A 1X12MYK...1-135

11

A 1Y 2MY04.....1-30

A 1Y 2MY05.....1-39

A 1Y 2MY08.....1-51

12

A 1Y 2MY10.....1-59

A 1Y 5MYK08.....1-159

A 1Z 2MYZ05.....1-98

13

A 1Z 2MYZ10.....1-112

A 1Z 6MWK10...1-161

A 1Z 6MWK10...1-161

14

A 1Z 6MYK10...1-161

A 2C22MYK25...1-86

A

A 2Z17ME0.....12-8

A 2Z18ME0.....12-9

A 2Z19ME.....12-10

A 2Z2.MC1010...12-4

A 2Z20M.C10100912-3

A 5A15M00.....6-61

A 5A15M33.....6-59

A 5A27M.....6-62

A 5B15M00.....6-61

A 5D28M.....6-44

A 5M 8MD.....7-16

A 5M 8MDD...7-16

A 5M 8MSE...7-19

A 5P15M00.....6-61

A 5P15M33...6-59

A 5Q 8MD.....7-9

A 5Q 8MDD...7-11

A 5Q 8MDG...7-12

A 5Q 8MDGZ...7-10

A 5Q 8MDM...7-10

A 5R21M13.....6-63

A 5R23M25S.....6-63

A 5R27M.....6-62

A 5R28M.....6-44

A 5T 8MD.....7-17

A 5T 8MDD...7-18

A 5T 8MSE30...7-20

A 5T 8MSE40...7-21

A 5T21M13.....6-63

A 5T23M25.....6-63

A 5X 8MSE...7-13

A 5X 9M.....6-73

A 5Y 8MDM...7-8

A 5Y 8MDU...7-8

A 5Z 7MS.....6-66

A 5Z 8MD.....7-17

A 5Z 8MDD...7-18

A 5Z 8MSE30...7-20

A 5Z 8MSE40...7-21

A 5Z 8MSEB...7-22

A 5Z15M00...6-61

A 5Z15M33...6-59

A 5Z21M13.....6-63

A 5Z23M25.....6-63

A 5Z27M.....6-62

A 5Z28M.....6-44

A 6A 2M..FA.....2-70

A 6A 2M..FAX.....2-70

A 6A 2M..XL.....2-71

A 6A 3M..DF...2-75

A 6A 3M..H...2-77

A 6A 3M..NF...2-78

A 6A 4M..DF...2-99

A 6A 4M..FA...2-97

A 6A 4M..L...2-98

A 6A 5M..FA...2-44

A 6A 9M.....2-23

A 6A09M.....2-19

A 6A15M.....2-45

A 6A16M.....2-49

A 6A17M.....2-29

A 6A17M..FA...2-28

A 6A18M.....2-31

A 6A20.....2-32

A 6A22M..FA...2-106

A 6A22M..TM...2-107

A 6A23M..DF...2-112

A 6A23M..NF...2-114

A 6A24M..FA...2-126

A 6A24M..TM...2-127

A 6A25M..DF...2-131

A 6A25M..NF...2-133

A 6A31M..FA...2-191

A 6A31M..T...2-192

A 6A32M.....2-193

A 6A34M..FA...2-197

A 6A34M..T...2-198

A 6A35M.....2-199

A 6A38M..FA...2-203

A 6A38M..T...2-204

A 6A50M..FA...2-148

A 6A50M..GT...2-149

A 6A51M..DF...2-152

A 6A51M..NF...2-153

A 6A52M..FA...2-167

A 6A52M..GT...2-168

A 6A53M.....2-171

A 6A54M..FA...2-181

A 6A54M..GT...2-182

A 6A55M..DF...2-186

A 6A55M..NF...2-187

A 6AR9M.....	2-20	A 6C88M19.....	2-227	A 6M51M.....	2-12
A 6AS9M.....	2-21	A 6C88M21.....	2-226	A 6M51M.....	2-159
A 6B 3-.....	2-67	A 6C88M480.....	2-228	A 6M53M.....	2-12
A 6B 3-D.....	2-69	A 6C88M635.....	2-231	A 6M55M.....	2-12
A 6B 3M.....	2-67	A 6D16M.....	2-47	A 6M61M..DF...	2-63
A 6B 3MD.....	2-69	A 6D23M.....	2-111	A 6N16M.....	2-48
A 6B 6-.....	2-57	A 6D51M.....	2-151	A 6O 9M.....	2-236
A 6B 6M.....	2-57	A 6D53M.....	2-170	A 6P 9M.....	2-235
A 6B 8M14.....	2-230	A 6G 3-.....	2-67	A 6Q 7M.....	2-218
A 6B 8M18.....	2-229	A 6G 3M.....	2-67	A 6R 3-.....	2-64
A 6B 8M19.....	2-227	A 6G 6-.....	2-57	A 6R 3-C.....	2-9
A 6B 8M635.....	2-231	A 6G 6M.....	2-57	A 6R 3-D.....	2-68
A 6B 8M952.....	2-231	A 6G16-.....	2-41	A 6R 3M.....	2-64
A 6B 8MHK.....	2-225	A 6G16M.....	2-41	A 6R 3MC.....	2-9
A 6B 8MHK.....	2-228	A 6G18M.....	2-27	A 6R 3MD.....	2-68
A 6B 9M.....	2-236	A 6G19M.....	2-33	A 6R 4-.....	2-94
A 6B16-.....	2-41	A 6G20M.....	2-35	A 6R 4-C.....	2-9
A 6B16-D.....	2-43	A 6H 3M..DF...	2-79	A 6R 4-D.....	2-96
A 6B16M.....	2-41	A 6H 3M..NF...	2-80	A 6R 4M.....	2-94
A 6B16MD.....	2-43	A 6H 3M..SF...	2-80	A 6R 4MC.....	2-9
A 6B18M.....	2-27	A 6H25M.....	2-135	A 6R 4MD.....	2-96
A 6B19M.....	2-33	A 6J 3M..DF...	2-81	A 6R 6-.....	2-55
A 6B20M.....	2-35	A 6J 3M..NF...	2-82	A 6R 6M.....	2-55
A 6C 2M..FS.....	2-70	A 6J 3M..SF...	2-82	A 6R11ML.....	2-237
A 6C 2M..FSX.....	2-70	A 6J 9MAA39.....	2-234	A 6R11ML.....	5-20
A 6C 2M..XL.....	2-72	A 6J 9MAS.....	2-234	A 6R12M2L.....	2-241
A 6C 3M..H.....	2-77	A 6J 9MB103.....	2-234	A 6R19M.....	2-239
A 6C 4M..FS.....	2-97	A 6J25M.....	2-136	A 6R23M.....	2-102
A 6C 4M..L.....	2-98	A 6L 3M..DF.....	2-90	A 6R23MC.....	2-10
A 6C 7MHK.....	2-219	A 6L 3M..NF.....	2-92	A 6R23MD.....	2-104
A 6C 7MYK.....	2-220	A 6L 3M..SF.....	2-91	A 6R25M.....	2-122
A 6C 8M14.....	2-230	A 6L23M.....	2-120	A 6R25MC.....	2-10
A 6C 8M18.....	2-229	A 6L25M.....	2-141	A 6R25MD.....	2-124
A 6C 8M19.....	2-227	A 6L51M.....	2-157	A 6R51M.....	2-143
A 6C 8M21.....	2-226	A 6L53M.....	2-176	A 6R51MC.....	2-11
A 6C 8M635.....	2-231	A 6M 3M.....	2-12	A 6R53M.....	2-160
A 6C 9M.....	2-23	A 6M 3M.....	2-93	A 6R53MC.....	2-11
A 6C22M..FS.....	2-106	A 6M 6M..DF...	2-63	A 6R53MD.....	2-165
A 6C22M..TM.....	2-109	A 6M 7M12-.....	2-213	A 6R55M.....	2-177
A 6C24M..FS.....	2-126	A 6M 7M12.....	2-214	A 6R55MC.....	2-11
A 6C24M..TM.....	2-129	A 6M 7M14.....	2-217	A 6R55MD.....	2-180
A 6C54M..FS.....	2-181	A 6M 7MHZ.....	2-223	A 6T 3-C.....	2-9
A 6C54M..GT.....	2-184	A 6M 7MMT.....	2-217	A 6T 3MC.....	2-9
A 6C88M14.....	2-230	A 6M16M.....	2-12	A 6T 4-C.....	2-9
A 6C88M18.....	2-229	A 6M16M.....	2-53	A 6T 4MC.....	2-9

R

T

1

2

3

4

5

6

7

8

9

10

11

12

13

14

A

R

A 6T10M012... 2-242

A 6T10M12... 2-238

A 6T16M... 2-51

A 6T19M... 2-240

A 6T32MF... 2-190

A 6T35MC... 2-10

A 6T35MDF... 2-196

A 6T35MF... 2-195

A 6T39MC... 2-10

A 6T39MDF... 2-202

A 6T39MF... 2-201

A 6T51M... 2-155

A 6TR9M... 2-20

A 6TS9M... 2-21

A 6X 7M14... 2-216

A 6X 8MHK... 2-228

A 6Y 7M... 2-218

A 6Y 7M37... 2-215

A 6Y 7MM... 2-215

A 6Y 8M... 2-225

A 6Y 8M14... 2-230

A 6Y 8M18... 2-229

A 6Y 8M19... 2-227

A 6Y 8M21... 2-226

A 6Y 8M480... 2-228

A 6Y 8M635... 2-231

A 6Y 8M952... 2-231

A 6Y77M37... 2-222

A 6Z 3M..DF... 2-83

A 6Z 3M..NF... 2-88

A 6Z 3M..SF... 2-86

A 6Z 4M... 2-100

A 6Z 6M..DF... 2-59

A 6Z 6M..SF... 2-61

A 6Z 7M... 2-221

A 6Z 8M14... 2-230

A 6Z 8M18... 2-229

A 6Z 8M19... 2-227

A 6Z 8M21... 2-226

A 6Z 9M... 2-23

A 6Z09M... 2-19

A 6Z10M012... 2-242

A 6Z10M13... 14-1

A 6Z16-... 2-37

A 6Z16-C... 2-9

A 6Z16M... 2-37

A 6Z16M... 2-52

A 6Z16MC... 2-9

A 6Z23M...DF... 2-116

A 6Z23M...NF... 2-119

A 6Z23M...SF... 2-118

A 6Z25M...DF... 2-137

A 6Z25M...SF... 2-139

A 6Z51M... 2-156

A 6Z53M...DF... 2-173

A 6Z53M...NF... 2-175

A 6Z53M...SF... 2-175

A 6Z61M..DF... 2-60

A 6Z61M..SF... 2-62

A 7A30-... 4-11

A 7A30M... 4-10

A 7B 4MF... 5-30

A 7B 4MP... 5-29

A 7B 4MS... 5-31

A 7B 8M... 10-48

A 7C 2M... 4-16

A 7C 8M... 10-48

A 7C12M... 6-69

A 7C13M... 6-70

A 7C15M... 9-10

A 7C15M.20... 9-11

A 7C15M0... 9-9

A 7C55MP... 5-10

A 7M 5MUR... 14-3

A 7M 7M... 5-59

A 7P 6M... 5-35

A 7Q 1M... 3-5

A 7Q15M... 9-10

A 7Q15M.20... 9-11

A 7Q15M0... 9-9

A 7Q16M... 9-12

A 7Q17M... 9-14

A 7T 5MUR... 14-2

A 7W15M... 9-10

A 7W15M.20... 9-11

A 7X 1M... 3-6

A 7X 1MP0... 1-23

A 7X 2M... 4-16

A 7X16M... 9-13

A 7X17MJ... 9-15

A 7Y 5MCF... 10-9

A 7Y 5MCF... 14-9

A 7Y 5MF... 5-9

A 7Y 5MP... 5-8

A 7Y 7M... 5-59

A 7Y15M... 9-10

A 7Y15M.20... 9-11

A 7Y16M... 9-12

A 7Z 2M... 4-16

A 7Z 5M... 5-14

A 7Z 5MUR... 14-4

A 7Z 6M... 5-71

A 7Z 7M... 5-59

A 7Z 8MURBB... 14-6

A 7Z 4M... 5-70

A 7Z16M3... 9-12

A 7Z29MXS... 5-67

A 7Z36M... 4-4

A 7Z38M... 4-5

A 7Z39M... 4-6

A 7Z40MFSB... 5-48

A 7Z40MFXB... 5-48

A 7Z41MPSB... 5-50

A 7Z42MBFM... 5-51

A 7Z47MPSN... 5-57

A 7Z54MFSL... 5-11

A 7Z56MBFM... 5-58

A 7Z58MBFM... 5-12

A 7Z59MPF... 5-13

A 7ZBMURG... 14-5

A 9C25M... 10-5

A 9C25ML... 10-6

A 9C39M... 10-68

A 9C49M... 10-67

A 9M41M... 10-46

A 9M41MKIT... 10-47

A 9X15M... 10-7

A 9X25M... 10-4

A 9X93MS... 10-36

A 3Y 3M.M06... 14-11

A 3Y 3M.Z0... 14-10

A 7B 7M... 10-49

A10Z 2M300... 8-13

A10Z 2M302... 8-11

A10Z 2M305... 8-12

1

2

3

4

5

6

7

8

9

10

11

12

13

14

A

A10Z 2M308.....	8-18	MD0472MQB...	10-54	S12A05M.....	1-43
A10Z 2M310.....	8-15	MD0911MQB...	10-44	S12A08M.....	1-54
A10Z 2M311.....	8-14	MD0912MQB...	10-28	S12A10M...03...	1-65
A10Z 2M312.....	8-17	MD0912MXO.....	10-27	S12M05M.....	1-102
A10Z 2M314.....	8-16	MD0916M.....	10-35	S12M08M.....	1-108
A10Z 7M1020.....	8-19	MD0921MCO.....	10-10	S12M10M.....	1-118
A10Z61MA.....	8-8	MD0923MCO.....	10-8	S12N05M...03...	1-42
A10Z61MB.....	8-8	MD0934M.....	10-45	S12N05M...05...	1-44
A10Z61MBG.....	8-7	MD0963MXO.....	10-17	S12N08M...03...	1-53
A10Z61MM.....	8-5	MD1481M.....	10-60	S12N08M...05...	1-55
A10Z61MS.....	8-8	MD6325MQ00...	10-59	S12N10M...03...	1-64
A10Z61MS.....	8-4	MD6799MQB...	10-53	S12N10M...05...	1-66
A10Z61MT.....	8-5	MD7991MQB0...	10-19	S12N12M...10...	1-71
A10Z62MGT.....	8-10	MD7991MXO.....	10-18	S12N15M.....	1-77
A10Z62MSN.....	8-9	S10A12M.....	2-206	S12N20M.....	1-84
A14Z 6-.....	2-24	S10A13M.....	2-210	S12N25M.....	1-89
A14Z 7-.....	2-24	S10A14M.....	2-212	S12N30M.....	1-93
A16A 3-.....	2-13	S10A15M.....	2-208	S12S05M.....	1-43
A16A 4-.....	2-13	S10CCPM.....	1-20	S12S08M.....	1-54
A16A25M.....	2-14	S10N10M.....	1-111	S12S10M...03...	1-65
A16A28M.....	2-14	S10N15M.....	1-120	S13S1YMK.....	1-144
A16A35M.....	2-18	S10N20M.....	1-123	S13S2YMK.....	1-151
A16A39M.....	2-18	S10P20M.....	1-82	S13S3YMK.....	1-151
A16A45M.....	2-17	S10P25M.....	1-88	S13S4YMK.....	1-151
A16A49M.....	2-17	S10P30M.....	1-92	S15S05M.....	1-10
A16A51M.....	2-15	S10S05M.....	1-10	S15S08M.....	1-12
A16A53M.....	2-15	S10S08M.....	1-12	S15S10M.....	1-14
A16A55M.....	2-16	S10S10M.....	1-14	S15S15M.....	1-16
A16A58M.....	2-16	S10S12M.....	2-206	S15S20M.....	1-17
A26R 3-.....	2-66	S10S13M.....	2-210	S181YYM.....	1-139
A26R51M.....	2-147	S10S14M.....	2-212	S18C05M.....	1-134
A26R53M.....	2-164	S10S15M.....	1-16	S18C08M.....	1-134
A26R55M.....	2-179	S10S15M.....	2-208	S18C10M.....	1-134
A26Z16-.....	2-40	S10S20M.....	1-17	S18C15M.....	1-134
A36R51M.....	2-145	S10S25M.....	1-18	S18CCPM.....	1-140
A36R53M.....	2-162	S10S30M.....	1-19	S1E10ZM.....	1-133
A36R55M.....	2-178	S10T05M.....	1-32	S1VS08M.....	1-48
MD0007MX00...	10-58	S10T08M.....	1-49	S1VS10M.....	1-56
MD0084MXO.....	10-15	S10T10M...05...	1-57	S1VZ05M.....	1-96
MD0085MXO.....	10-12	S10T10M...10...	1-62	S1VZ08M.....	1-104
MD0125M.....	10-49	S10T10M...10...	1-69	S1VZ10M.....	1-109
MD0127M.....	10-52	S10T12M...10...	1-69	S200MYM.....	1-175
MD0137M.....	10-51	S10T15M.....	1-74	S21AMYM.....	4-8
MD0471M.....	10-55	S10Z05M.....	1-97	S21HSCM.....	4-9
MD0471MQB.....	5-20	S10Z08M.....	1-105	S21SACM.....	4-18
		S10Z10M.....	1-110		

R

T

1

2

3

4

5

6

7

8

9

10

11

12

13

14

A

R

S25CY9MPC..... 4-15

S25FB9MPC..... 4-13

S25FLYM..... 4-14

S25FY9MPC..... 4-13

S25NSCM1S..... 4-17

S25NSCM2S..... 4-17

S2F0MYM..... 1-174

S35SFXM..... 6-18

S40AW6M..... 3-7

S40LPSM..... 3-8

S40PH0MCHS..... 3-3

S40PX0MCHS..... 3-4

S40PX0MHG..... 3-2

S50BP9M0..... 6-13

S50CLMM..... 6-3

S50CLPM..... 6-4

S50DCMM..... 6-75

S50FLRM..... 6-48

S50FLSM..... 6-48

S50FP9MFB..... 6-5

S50FP9MFBC..... 6-6

S50FSRM..... 6-46

S50FSSM..... 6-46

S50GL2MA..... 6-55

S50GS2MA..... 6-51

S50GT2MA..... 6-53

S50HAWM..H..... 6-36

S50HAWM..P..... 6-38

S50HS9M..... 6-40

S50HPWWM..H..... 6-35

S50HWWWM..P..... 6-37

S50MFBM...H..... 6-7

S50MFBM...P..... 6-9

S50MFBMA..P..... 6-11

S50MHSM..... 6-41

S50MHWM..... 6-42

S50MSCM..... 6-26

S50MSKM..... 6-32

S50MSTMA..... 6-24

S50MSTMS..... 6-22

S50MSXM..... 6-30

S50PLRM..... 6-49

S50PLSM..... 6-49

S50PMRM..... 6-45

S50PSRM..... 6-47

S50PSSM..... 6-47

S50SFXM..... 6-18

S50TLCM..... 6-34

S50XUTM..... 6-57

S50XUVM..... 6-60

S51CAYM..... 6-72

S51CBYM..... 6-72

S51CYM..... 6-72

S51FCZM..... 6-71

S52FCYM..... 6-74

S52FCYM..... 6-74

S54HSAM..... 6-43

S54MHCM..... 6-39

S54PSAM..... 6-43

S55SS7MFS..... 6-68

S57PY4MDFU..... 7-7

S57PY4MDFUT... 7-14

S57PY4MSFU..... 7-7

S57PY5MDU..... 7-6

S57PY5MDUT... 7-14

S57PY5MSU..... 7-6

S58PY5MMJC..... 6-67

S5911YMJR..... 6-64

S5911YMJRM... 6-65

S60SFXM..... 6-18

S61GPBM..... 5-66

S61PPCM..... 5-68

S61PPZM..... 5-69

S61PSCM..... 5-68

S61PSZM..... 5-69

S61SFAM..... 4-19

S62GFRM..... 5-65

S62GMRM..... 5-63

S64AMRM..... 9-16

S64SBAM..... 4-19

S6513HM..... 9-3

S6652HM2135... 9-4

S6652HMB2135... 9-4

S6652HMF2135... 9-4

S6652HMW6135... 9-4

S6653HM2130... 9-5

S700NFM0..... 10-16

S704SPM0..... 10-13

S704SZM0..... 10-14

S705CBM..... 10-33

S705CFM..... 10-34

S705YBM..... 10-33

S705YFM..... 10-34

S706SCM0..... 10-30

S706SHM..... 10-23

S706SHM0..... 10-32

S706SLM0..... 10-31

S706TSM0..... 10-22

S706Y3M..... 10-3

S707CBM..... 10-38

S707CPM..... 10-42

S707YBM..... 10-38

S707YPM..... 10-42

S709ETM0..... 10-20

S709NHM0..... 10-11

S7270YM..... 10-66

S73NW2MGR555 10-57

S78CSYM..... 10-63

S78ESYM..... 10-61

S78TSYM..... 10-65

S7912YMC32..... 2-205

S7913YM20..... 2-209

S7914YM20..... 2-211

S7915YMCP..... 2-207

S79RUBM..... 4-18

S7AYPAM..... 14-7

S90APLMP08... 13-6

S90APLMS08... 13-6

S90BF9M..... 13-27

S90BPLMP08... 13-7

S90BPLMS08... 13-7

S90HB1M... 13-24

S90MCCM513... 13-16

S90MCCM8061... 13-18

S90MCCMRTL... 13-17

S90SB9M..... 13-25

S9160AMPRX... 11-5

S9160AMRTX... 11-6

S9190AMPRX... 11-7

S9190AMRTX... 11-8

S98CA6MM0C... 13-3

S98CA6MMEC... 13-3

S9901YM0..... 6-15

S9901YMG..... 6-14

T

1

2

3

4

5

6

7

8

9

10

11

12

13

14

A

S9912YM...FS.....	5-7	S99GNCM17202.....	9-19	S99NH4MURC....	5-55
S9912YM...PS.....	5-6	S99GNCM27.....	9-20	S99NH4MURC....	13-21
S991LYM.....	12-6	S99GNCM40502....	9-21	S99NH4MURC0...	13-20
S991TYM.....	12-7	S99GNRM17.....	9-19	S99RD1MBE...-1.	12-1
S9930AMKRV.....	14-8	S99GNRM27.....	9-20	S99RD1MBE...-2.	12-2
S9940YMSWC...	13-9	S99GNRM40.....	9-21	S99RH2MBNR...	5-53
S9941YMSWC...	13-11	S99GNRM80.....	9-22	S99TBSM.....	4-7
S99APCM.....	5-20	S99GSBM.....	5-33	SIV05M.....	1-31
S99APZM.....	5-20	S99GSPM.....	5-23		
S99BP3MPB...	5-27	S99GTFM.....	5-41		
S99BP4MFB...	5-28	S99GTPM...	5-39		
S99BPCM...	5-22	S99GTTM...	5-62		
S99BSCM...	5-22	S99GWCM40...	9-24		
S99GGFM...	5-38	S99GWCM80...	9-25		
S99GGPM...	5-36	S99GWRM40...	9-24		
S99GGTM...	5-61	S99GWRM80...	9-25		
S99GHFM...	5-44	S99HDPM...	5-16		
S99GHPM...	5-42	S99LBCM...	5-17		
S99GLPM...	5-24	S99LBOM...	5-18		
S99GLZM...	5-26	S99NH2MBN...	5-52		
S99GMCM...	5-46	S99NH3MURC...	5-54		
S99GMYM...	5-45	S99NH3MURC...	13-19		

R

T

1

2

3

4

5

6

7

8

9

10

11

12

13

14

A