

EXTENSION SPRINGS

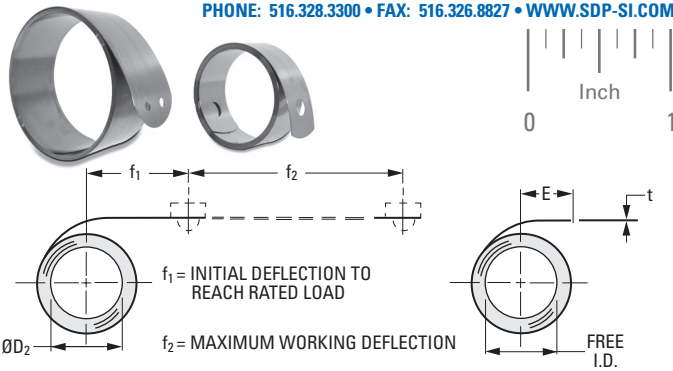
PHONE: 516.328.3300 • FAX: 516.326.8827 • WWW.SDP-SI.COM

> MATERIAL:

301 Stainless Steel

> FATIGUE LIFE:

2500 Cycles Minimum



INCH COMPONENT

Catalog Number	Load lbf ± 10%	D ₂ Drum Dia.*	Free I.D. Ref.	f ₁	f ₂	t Thickness	W Width	Band Length
A 3X50-SH03C10	.37	.261	7/32	.39	8	.003	3/16	10
A 3X50-SH04C14	.49	.349	19/64	.52	12	.004	3/16	14
A 3X50-SH04D14	.66	.349	19/64	.52	12	.004	1/4	14
A 3X50-SH04E14	.83	.349	19/64	.52	12	.004	5/16	14
Δ A 3X50-SH05E15	1.03	.436	23/64	.65	12	.005	5/16	15
A 3X50-SH06F21	1.48	.523	7/16	.78	18	.006	3/8	21
A 3X50-SH06G21	1.97	.523	7/16	.78	18	.006	1/2	21
Δ A 3X50-SH08G28	2.63	.697	37/64	1.06	24	.008	1/2	28
A 3X50-SH08J28	3.29	.697	37/64	1.06	24	.008	5/8	28
Δ A 3X50-SH10J29	4.12	.873	47/64	1.31	24	.010	5/8	29
Δ A 3X50-SH10K29	4.95	.873	47/64	1.31	24	.010	3/4	29
A 3X50-SH12K36	5.94	1.050	7/8	1.56	30	.012	3/4	36
A 3X50-SH12P36	7.92	1.050	7/8	1.56	30	.012	1	36
A 3X50-SH16P38	10.60	1.400	1-5/32	2.10	30	.016	1	38
A 3X50-SH20R47	16.50	1.750	1-15/32	2.60	36	.020	1-1/4	47
A 3X50-SH20S47	19.80	1.750	1-15/32	2.62	36	.020	1-1/2	47
A 3X50-SH25S48	24.80	2.180	1-53/64	3.27	36	.025	1-1/2	48
A 3X50-SH25U48	33.00	2.180	1-53/64	3.27	36	.025	2	48
A 3X50-SH31U58	40.90	2.710	2-17/64	4.00	42	.031	2	58

* Drums are not supplied.

Δ Springs have a hole at both ends.

> MOUNTING HOLE SPECIFICATIONS

Catalog Number (Ref.)	Fig. No.	E	R Radius	A Dia.	B	C
A 3X50-SH03C10	1	5/32	5/32**	.095	3/32	—
A 3X50-SH04C14		5/32	5/32**	.095	3/32	—
A 3X50-SH04D14		7/32	1/2	.131	3/16	—
A 3X50-SH04E14		7/32	7/32**	.131	3/16	—
Δ A 3X50-SH05E15		7/32	1/2	.131	3/16	—
A 3X50-SH06F21		1/4	1/2	.191	11/32	—
A 3X50-SH06G21		1/4	1/2	.191	11/32	—
Δ A 3X50-SH08G28		3/8	1/2	.191	11/32	—
A 3X50-SH08J28		3/8	1/2	.191	11/32	—
Δ A 3X50-SH10J29		7/16	1/2	.191	11/32	—
Δ A 3X50-SH10K29		7/16	1/2	.191	11/32	—
A 3X50-SH12K36		1/2	1/2	.191	11/32	—
A 3X50-SH12P36		3/4	9/16	.193	3/8	—
A 3X50-SH16P38		3/4	9/16	.193	3/8	—
A 3X50-SH20R47		7/8	1-1/32	.193	3/8	—
A 3X50-SH20S47		2	7/8	1-1/32	.256	5/8
A 3X50-SH25S48	1-1/8		1-1/32	.256	5/8	.766
A 3X50-SH25U48	1-1/8		1-1/32	.256	5/8	.766
A 3X50-SH31U58	1-1/4		1-1/32	.256	5/8	.766

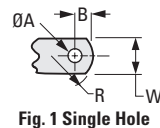


Fig. 1 Single Hole

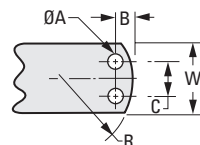


Fig. 2 Double Hole

** Fig. 3

Present Radius	Radius Supplied after Present Stock is Depleted
5/32	1/2
7/32	1/2

** To be replaced when present stock is depleted.



EXTENSION SPRINGS

PHONE: 516.328.3300 • FAX: 516.326.8827 • WWW.SDP-SI.COM

> MATERIAL:

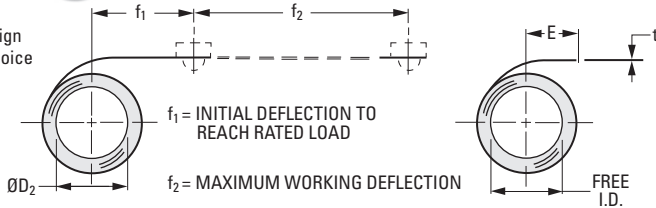
301 Stainless Steel

> FATIGUE LIFE:

13000 Cycles Minimum



These springs provide the design engineer with a convenient choice of sizes for use in developing product prototypes and small production quantities. Springs are supplied with free ends punched for fastening as indicated in the drawings.



INCH COMPONENT

Catalog Number	Load lbf ± 10%	D ₂ Drum Dia.*	Free I.D. Ref.	f ₁	f ₂	t Thickness	W Width	Band Length
A 3X50-SK04D15	.32	.533	7/16	.80	12	.004	1/4	15
A 3X50-SK04E15	.40	.533	7/16	.80	12	.004	5/16	15
A 3X50-SK05E16	.49	.665	9/16	1.00	12	.005	5/16	16
A 3X50-SK06F23	.71	.798	43/64	1.20	18	.006	3/8	23
A 3X50-SK06G23	.95	.798	43/64	1.20	18	.006	1/2	23
A 3X50-SK08G30	1.26	1.060	7/8	1.59	24	.008	1/2	30
Δ A 3X50-SK08J30	1.58	1.060	7/8	1.59	24	.008	5/8	30
A 3X50-SK10J32	1.98	1.330	1-7/64	2.00	24	.010	5/8	32
A 3X50-SK10K32	2.37	1.330	1-7/64	2.00	24	.010	3/4	32
A 3X50-SK12K40	2.84	1.590	1-11/32	2.38	30	.012	3/4	40
A 3X50-SK12P40	3.79	1.590	1-11/32	2.38	30	.012	1	40
A 3X50-SK15P42	4.74	1.990	1-43/64	2.98	30	.015	1	42
A 3X50-SK18P47	5.69	2.400	2	3.60	32	.018	1	47
A 3X50-SK20S52	9.48	2.650	2-7/32	3.97	36	.020	1-1/2	52
A 3X50-SK25S57	11.90	3.330	3	5.00	36	.025	1-1/2	57
A 3X50-SK25U57	15.80	3.330	3	5.00	36	.025	2	57
A 3X50-SK31U68	19.60	4.120	3-7/16	6.18	42	.031	2	68

* Drums are not supplied.

Δ Spring has a hole at both ends.

> MOUNTING HOLE SPECIFICATIONS

Catalog Number (Ref.)	E	R Radius	A Dia.	B	C
Fig. 1					
A 3X50-SK04D15	1/4	7/32**	.131	3/16	—
A 3X50-SK04E15	1/4	7/32**	.131	3/16	—
A 3X50-SK05E16	5/16	7/32**	.131	3/16	—
A 3X50-SK06F23	3/8	1/2	.191	11/32	—
A 3X50-SK06G23	3/8	1/2	.191	11/32	—
A 3X50-SK08G30	1/2	1/2	.191	11/32	—
Δ A 3X50-SK08J30	1/2	1/2	.191	11/32	—
A 3X50-SK10J32	5/8	1/2	.191	11/32	—
A 3X50-SK10K32	5/8	1/2	.191	11/32	—
A 3X50-SK12K40	7/8	1/2	.191	11/32	—
A 3X50-SK12P40	7/8	1-1/32**	.193	3/8	—
A 3X50-SK15P42	1	1-1/32**	.193	3/8	—
A 3X50-SK18P47	1-1/8	1-1/32**	.193	3/8	—
Fig. 2					
A 3X50-SK20S52	1-1/4	1-1/32	.256	5/8	.766
A 3X50-SK25S57	1-1/2	1-1/32	.256	5/8	.766
A 3X50-SK25U57	1-1/2	1-1/32	.256	5/8	.766
A 3X50-SK31U68	2	1-1/32	.256	5/8	.766

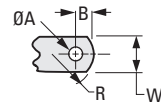


Fig. 1 Single Hole

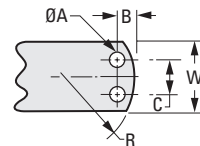


Fig. 2 Double Hole

****CHANGE IN RADIUS**

Present Radius	Radius Supplied after Present Stock is Depleted
7/32	1/2
1-1/32	9/16

I
R
T
1
2
3
4
5
6
7
8
9
10
11
12
13
14
15
16

EXTENSION SPRINGS

PHONE: 516.328.3300 • FAX: 516.326.8827 • WWW.SDP-SI.COM

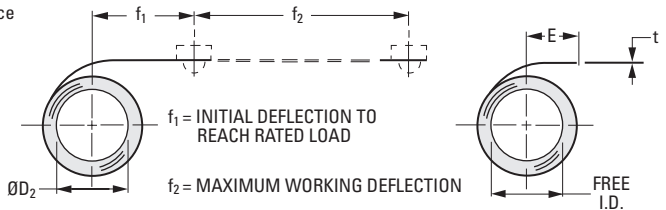
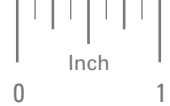
► MATERIAL:

301 Stainless Steel

► FATIGUE LIFE:

20000 Cycles Minimum

These springs provide the design engineer with a convenient choice of sizes for use in developing product prototypes and small production quantities. Springs are supplied with free ends punched for fastening as indicated in the drawings.



INCH COMPONENT

Catalog Number	Load lbf ± 10%	D ₂ Drum Dia.*	Free I.D. Ref.	f ₁	f ₂	t Thickness	W Width	Band Length
A 3X50-SL04D16	.23	.631	33/64	.950	12	.004	1/4	16
A 3X50-SL05E17	.36	.787	21/32	1.180	12	.005	5/16	17
A 3X50-SL05F30	.43	.750	21/32	1.120	25	.005	3/8	30
Δ A 3X50-SL06F24	.52	.947	25/32	1.430	18	.006	3/8	24
Δ A 3X50-SL06G24	.70	.947	25/32	1.430	18	.006	1/2	24
Δ A 3X50-SL08G31	.93	1.260	1-3/64	1.880	24	.008	1/2	31
A 3X50-SL10J33	1.46	1.580	1-21/64	2.370	24	.010	5/8	33
A 3X50-SL12K42	2.09	1.900	1-37/64	2.870	30	.012	3/4	42
A 3X50-SL12P42	2.80	1.900	1-37/64	2.870	30	.012	1	42
A 3X50-SL15P46	3.50	2.370	1-63/64	3.560	30	.015	1	46
A 3X50-SL15R46	4.37	2.370	1-63/64	3.560	30	.015	1-1/4	46
A 3X50-SL20R54	5.83	3.160	2-5/8	4.750	36	.020	1-1/4	54
A 3X50-SL20S54	6.99	3.160	2-5/8	4.750	36	.020	1-1/2	54
A 3X50-SL25S59	8.74	3.960	3-19/64	6.000	36	.025	1-1/2	59
A 3X50-SL25U59	11.70	3.960	3-19/64	6.000	36	.025	2	59
A 3X50-SL31U69	14.40	4.890	4-5/64	7.300	42	.031	2	69

* Drums are not supplied.

Δ Springs have a hole at both ends.

► MOUNTING HOLE SPECIFICATIONS

Catalog Number (Ref.)	E	R Radius	A Dia.	B	C
Fig. 1					
A 3X50-SL04D16	5/16	7/32**	.131	3/16	—
A 3X50-SL05E17	13/32	7/32**	.131	3/16	—
A 3X50-SL05F30	5/16	7/32**	.187	5/16	—
Δ A 3X50-SL06F24	1/2	1/2	.191	11/32	—
Δ A 3X50-SL06G24	1/2	1/2	.191	11/32	—
Δ A 3X50-SL08G31	5/8	1/2	.191	11/32	—
A 3X50-SL10J33	3/4	1/2	.191	11/32	—
A 3X50-SL12K42	7/8	1/2	.191	3/8	—
A 3X50-SL12P42	7/8	1-1/32**	.193	3/8	—
A 3X50-SL15P46	1	1-1/32**	.193	3/8	—
A 3X50-SL15R46	1	1-1/32	.193	3/8	—
A 3X50-SL20R54	1-1/2	1-1/32	.193	3/8	—
Fig. 2					
A 3X50-SL20S54	1-1/2	1-1/32	.256	5/8	.766
A 3X50-SL25S59	1-1/2	1-1/32	.256	5/8	.766
A 3X50-SL25U59	1-1/2	1-1/32	.256	5/8	.766
A 3X50-SL31U69	2	1-1/32	.256	5/8	.766

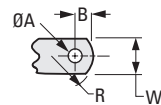


Fig. 1 Single Hole

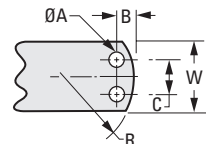


Fig. 2 Double Hole

**CHANGE IN RADIUS

Present Radius	Radius Supplied after Present Stock is Depleted
7/32	1/2
1-1/32	9/16