



Fairloc® Hub Gears - Module 0.5

Stock Drive Products/Sterling Instrument ■ Phone: 516-328-3300 ■ Fax: 516-326-8827

- ISO CLASS 7
- 20° PRESSURE ANGLE
- 5 & 7 mm FACE WIDTH

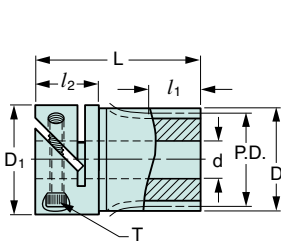


Fig. 1

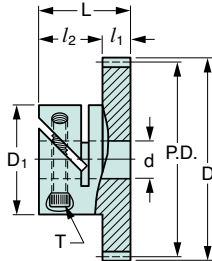
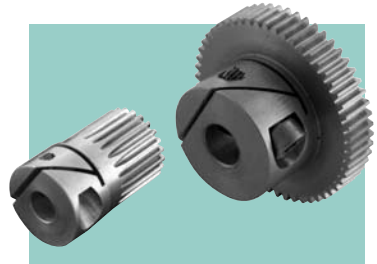


Fig. 2



NOTE: Socket Head Cap Screw Supplied.



MATERIAL: 303 Stainless Steel

Catalog Number	Fig. No.	No. of Teeth	P.D.	D	d* Bore H7	l_1 Face Width	L	D_1	l_2	T	Hub Clear. Rad.
S1VS05M016F0704	1	16	8	9	4	7	22	14	8	M2.5	8.3
S1VS05M018F0704		18	9	10							
S1VS05M020F0704		20	10	11							
S1VS05M024F0705		24	12	13	5	7					
S1VS05M025F0705		25	12.5	13.5							
S1VS05M028F0705		28	14	15							
S1VS05M030F0705	30	15	16								
S1VS05M032F0506	2	32	16	17	6	5	15	17	10	M3	11.3
S1VS05M036F0506		36	18	19							
S1VS05M040F0506		40	20	21							
S1VS05M045F0506		45	22.5	23.5							
S1VS05M048F0506		48	24	25							
S1VS05M050F0506		50	25	26							
S1VS05M054F0506		54	27	28	8	5					
S1VS05M056F0506		56	28	29							
S1VS05M060F0508		60	30	31							
S1VS05M064F0508		64	32	33							
S1VS05M070F0508		70	35	36							
S1VS05M072F0508		72	36	37							
S1VS05M075F0508		75	37.5	38.5	10	5					
S1VS05M080F0510		80	40	41							
S1VS05M090F0510		90	45	46							
S1VS05M096F0510		96	48	49							
S1VS05M100F0510		100	50	51							
S1VS05M112F0510		112	56	57							
S1VS05M120F0510	120	60	61								

*Bore Tolerance: 4, 5 & 6 mm + 0.012
8 & 10 mm + 0.015

Gears larger than 90 teeth have two-piece construction.

Fairloc® hubs require controlled shaft tolerances.
Suggested tolerance according to g6, h6 or h7.

