

SDPSI

Inch Inch Inch Inch Inch Inch Inch Inch Inch

Fairloc® Hub Gears - 48 Pitch**Stock Drive Products/Sterling Instrument ■ Phone: 516-328-3300 ■ Fax: 516-326-8827**

■ AGMA Q10

■ 20° PRESSURE ANGLE

■ .197 & .250 FACE WIDTH

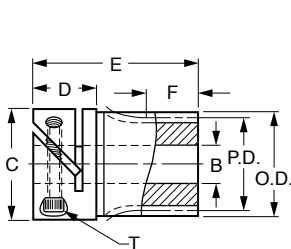


Fig. 1

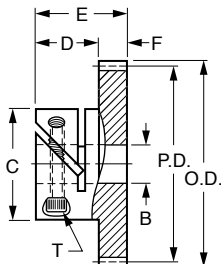
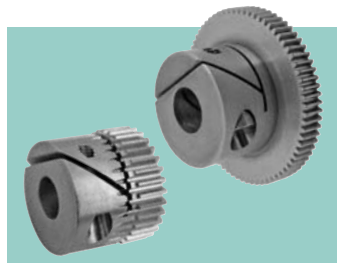


Fig. 2

NOTE: Socket Head Cap Screw Supplied.



MATERIAL: 303 Stainless Steel

Catalog Number	Fig. No.	No. of Teeth	P.D.	O.D.	B Bore +.0005 -.0000	F	E	C	D	T	Hub Clear. Rad.							
S1VS48-016F1608	1	16	.3333	.375	.1248	.250	.866	.551	.315	#2-56	.327							
S1VS48-018F1608		18	.3750	.417														
S1VS48-020F1608		20	.4167	.458														
S1VS48-024F1612		24	.5000	.542														
S1VS48-025F1612		25	.5208	.563														
S1VS48-028F1612	28	.5833	.625	.1873														
S1VS48-030F1316	2	30	.6250	.667	.2498	.197	.591	.669	.394	#2-56	.445							
S1VS48-032F1316		32	.6667	.708														
S1VS48-036F1316		36	.7500	.792														
S1VS48-040F1316		40	.8333	.875														
S1VS48-045F1316		45	.9375	.979														
S1VS48-048F1316		48	1.0000	1.042														
S1VS48-050F1316		50	1.0417	1.083														
S1VS48-054F1316		54	1.1250	1.167														
S1VS48-056F1316		56	1.1667	1.208														
S1VS48-060F1316		60	1.2500	1.292														
S1VS48-064F1324		64	1.3333	1.375								.3747	.197	.750	.945	.551	#6-32	.551
S1VS48-070F1324		70	1.4583	1.500														
S1VS48-072F1324		72	1.5000	1.542														
S1VS48-075F1324		75	1.5625	1.604														
S1VS48-080F1324		80	1.6667	1.708														
S1VS48-090F1324	90	1.8750	1.917															
S1VS48-096F1324	96	2.0000	2.042															
S1VS48-100F1324	100	2.0833	2.125															
S1VS48-112F1324	112	2.3333	2.375															
S1VS48-120F1324	120	2.5000	2.542															

Fairloc® hubs require controlled shaft tolerances.

Suggested clearance fit between the bore and the shaft is .0001/.0008.

SDPSI

Inch Inch Inch Inch Inch Inch Inch Inch Inch

Fairloc® Hub Gears - 32 Pitch**Stock Drive Products/Sterling Instrument ■ Phone: 516-328-3300 ■ Fax: 516-326-8827**

■ AGMA Q10

■ 20° PRESSURE ANGLE

■ .197 & .250 FACE WIDTH

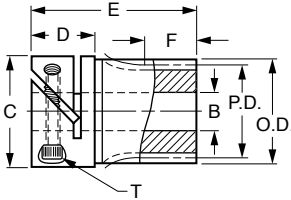


Fig. 1

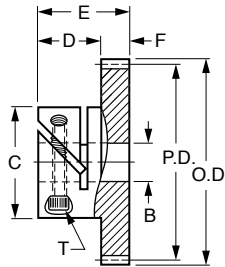
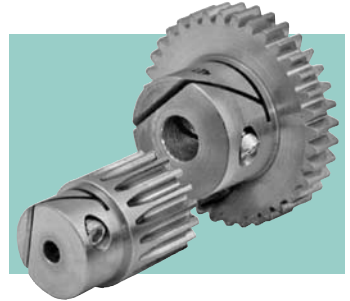


Fig. 2



NOTE: Socket Head Cap Screw Supplied.

MATERIAL: 303 Stainless Steel

Catalog Number	Fig. No.	No. of Teeth	P.D.	O.D.	B Bore +.0005 -.0000	F	E	C	D	T	Hub Clear. Rad.
S1VS32-014F1608	1	14	.4375	.500	.1248	.250	.866	.551	.315	#2-56	.326
S1VS32-015F1608		15	.4688	.531							
S1VS32-016F1608		16	.5000	.563							
S1VS32-018F1608		18	.5625	.625							
S1VS32-020F1312	2	20	.6250	.688	.1873	.197	.512	.551	.315	#2-56	.326
S1VS32-024F1312		24	.7500	.813							
S1VS32-025F1312		25	.7813	.844							
S1VS32-028F1312		28	.8750	.938							
S1VS32-030F1312		30	.9375	1.000							
S1VS32-032F1312		32	1.0000	1.063							
S1VS32-036F1316		36	1.1250	1.188							
S1VS32-040F1316		40	1.2500	1.313							
S1VS32-045F1316		45	1.4063	1.469							
S1VS32-048F1316		48	1.5000	1.563							
S1VS32-050F1316		50	1.5625	1.625							
S1VS32-054F1316		54	1.6875	1.750							
S1VS32-056F1316		56	1.7500	1.813							
S1VS32-060F1324		60	1.8750	1.938							
S1VS32-064F1324		64	2.0000	2.063							
S1VS32-070F1324		70	2.1875	2.250							
S1VS32-072F1324	72	2.2500	2.313								
S1VS32-075F1324	75	2.3438	2.406								
S1VS32-080F1324	80	2.5000	2.563								
S1VS32-090F1324	90	2.8125	2.875								
S1VS32-096F1324	96	3.0000	3.063								
S1VS32-100F1324	100	3.1250	3.188								

Fairloc® hubs require controlled shaft tolerances.

Suggested clearance fit between the bore and the shaft is .0001/.0008.

