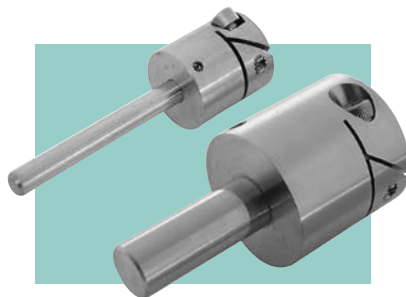
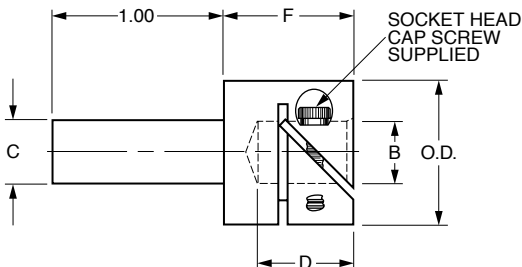


Inch Inch Inch Inch Inch Inch Inch Inch Inch Inch

SDPSI Fairloc® Shaft Reducers & Extenders

Stock Drive Products/Sterling Instrument ■ Phone: 516-328-3300 ■ Fax: 516-326-8827



S Precision Component

MATERIAL: 303 Stainless Steel

Catalog Number	Shaft Size		O.D.	B Bore +.0005 -.0000	C Diameter +.0000 -.0002	D	F	Screw Size	Clear. Radius
	Female	Male							
S52FCY-120125 S52FCY-120187	.120	1/8 3/16	.437	.1200	.1247 .1872	.375	1/2	#2-56	.273
S52FCY-125125 S52FCY-125187 S52FCY-125250	1/8	3/16 1/4		.1248	.1247 .1872 .2497				
S52FCY-187125 S52FCY-187187 S52FCY-187250	3/16	1/8 3/16 1/4		.1873	.1247 .1872 .2497				
S52FCY-241187 S52FCY-241250 S52FCY-241375	.2405	3/16 1/4 3/8	.530	.2405	.1872 .2497 .3747	.375	1/2	#2-56	.315
S52FCY-250125 S52FCY-250187 S52FCY-250250 S52FCY-250375	1/4	1/8 3/16 1/4 3/8		.2498	.1247 .1872 .2497 .3747				
S52FCY-375250 S52FCY-375375 S52FCY-375500	3/8	1/4 3/8 1/2		.3748	.2497 .3747 .4997				
S52FCY-500375 S52FCY-500500	1/2	3/8 1/2	1.000	.4998	.3747 .4997	.750	1	#6-32	.552

- NOTES:**
1. B and C dimensions concentric to within .001 T.I.R.
 2. Fairloc® hubs require controlled shaft tolerances. Suggested clearance fit between the bore and shaft is .0001/.0008.

Metric

Metric

Metric

Metric

Metric

Metric

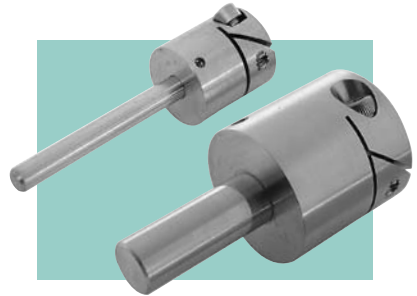
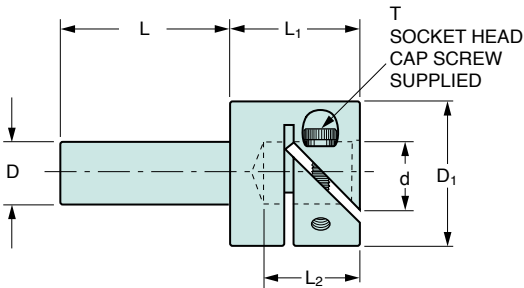
Metric

SDPSI**Fairloc® Shaft Reducers & Extenders**

Stock Drive Products/Sterling Instrument

Phone: 516-328-3300

Fax: 516-326-8827

**S** Precision Component**MATERIAL:** 303 Stainless Steel

Catalog Number	d* H7	D** g6	D ₁	L	L ₁	L ₂	T	Clear. Radius	Max. Torque N·m
S52FCYM030030 S52FCYM030040 S52FCYM030050	3	3 4 5	11	25	15	9	M2	6.4	0.45
S52FCYM040030 S52FCYM040040 S52FCYM040050	4	3 4 5	14	25	15	9	M2.5	8.3	0.57
S52FCYM050030 S52FCYM050040 S52FCYM050050 S52FCYM050060	5	3 4 5 6	14	25	15	9	M2.5	8.3	0.9
S52FCYM060040 S52FCYM060050 S52FCYM060060 S52FCYM060080 S52FCYM060100	6	4 5 6 8 10	17	25	18	11	M3	11.3	1.3
S52FCYM080050 S52FCYM080060 S52FCYM080080 S52FCYM080100 S52FCYM080120	8	5 6 8 10 12	17	25	18	11	M3	11.3	2.6
S52FCYM100060 S52FCYM100080 S52FCYM100100 S52FCYM100120	10	6 8 10 12	24	30	23	15	M4	14	3.5
S52FCYM120080 S52FCYM120100 S52FCYM120120	12	8 10 12	26	30	26	18	M4	15.1	5.1

*Bore Tolerance (H7):
 3 mm +0.01
 4, 5 & 6 mm +0.012
 8 & 10 mm +0.015
 12 mm +0.018

**Shaft Tolerance (g6):
 3 mm -0.002/-0.008
 4, 5 & 6 mm -0.004/-0.012
 8 & 10 mm -0.005/-0.014
 12 mm -0.006/-0.017

NOTES: 1. d bores and D shafts concentric to within 0.025 mm T.I.R.

2. Fairloc® hubs require controlled mating shaft tolerances: g6, h6 or h7.

3. Metric to inch or inch to metric connections, other sizes and materials, available on special order.