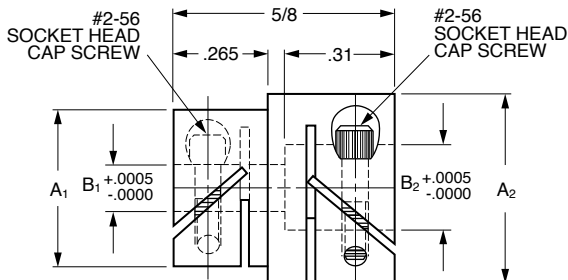


■ **NONMARRING**

■ **ADJUSTABLE**

■ **RIGID**



**MATERIAL:** 303 Stainless Steel

Catalog Number	B <sub>1</sub> Bore	A <sub>1</sub>	Clear. Radius	B <sub>2</sub> Bore	A <sub>2</sub>	Clear. Radius
S51FCZ-090120	.0900			.1200	.437	.273
S51FCZ-090125				.1248		
S51FCZ-090187				.1873		
S51FCZ-090250	.0937			.2498	.530	.304
S51FCZ-094125				.1248		
S51FCZ-094187				.1873		
S51FCZ-094250	.1200	.437	.273	.2498	.530	.304
S51FCZ-120120				.1200		
S51FCZ-120125				.1248		
S51FCZ-120187	.1200			.1873	.437	.273
S51FCZ-120241				.2405		
S51FCZ-120250				.2498		
S51FCZ-125125	.1248			.1248	.530	.304
S51FCZ-125125				.1248		
S51FCZ-125187				.1873		
S51FCZ-125241	.1248			.2405	.437	.273
S51FCZ-125250				.2498		
S51FCZ-187187				.1873		
S51FCZ-187241	.1873			.2405	.530	.304
S51FCZ-187250				.2498		
S51FCZ-250250				.2498		

**NOTES:** 1. B<sub>1</sub> & B<sub>2</sub> concentric within .001 T.I.R.

2. Fairloc® hubs require controlled shaft tolerances. Suggested clearance fit between the bore and shaft is .0001/.0008.

Other sizes, material available on special order.

**SDPSI****Rigid Fairloc® Shaft Couplings**

Stock Drive Products/Sterling Instrument

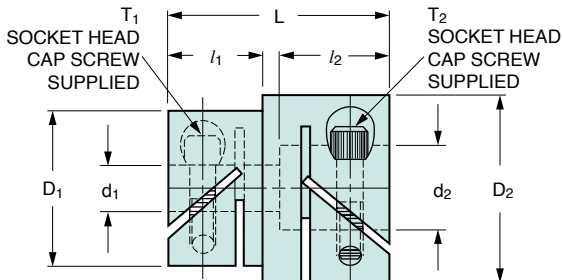
Phone: 516-328-3300

Fax: 516-326-8827

## ■ NONMARRING

## ■ ADJUSTABLE

## ■ RIGID

**S** Precision Component**MATERIAL:** 303 Stainless Steel

Catalog Number	$d_1^*$ H7	$d_2^*$ H7	$D_1$	$D_2$	L	$l_1$	$l_2$	$T_1$	$T_2$	Max. Clear. Radius	Max. Torque N·m
S51FCZM025030	2.5	3	11	11	19	—	9	M2	M2	6.4	0.4
S51FCZM025040		4		14	19	8	9	M2	M2.5	8.3	
S51FCZM025050		5		—	—	M2	M2	6.4			
S51FCZM030030	3	3	11	11	19	—	—	M2	M2	6.4	0.45
S51FCZM030040		4		14	19	8	9	M2	M2.5	8.3	
S51FCZM030050		5		17	21	8	11	M2	M3	11.3	
S51FCZM030060		6		—	—	M2.5	M2.5	8.3			
S51FCZM040040	4	4	14	14	19	—	—	M2.5	M2.5	8.3	0.57
S51FCZM040050		5		17	21	8	11	M2.5	M3	11.3	
S51FCZM040060		6		—	—	M2.5	M2.5	8.3			
S51FCZM040080		8		14	19	—	—	M2.5	M2.5	8.3	
S51FCZM050050	5	5	14	14	19	—	—	M2.5	M2.5	8.3	0.9
S51FCZM050060		6		17	21	8	11	M2.5	M3	11.3	
S51FCZM050080		8		24	25	8	15	M2.5	M4	14	
S51FCZM050100		10		—	—	M3	M3	11.3			
S51FCZM060060	6	6	17	17	23	—	—	M3	M3	11.3	1.3
S51FCZM060080		8		24	27	10	15	M3	M4	14	
S51FCZM060100		10		26	30	10	18	M3	M4	15.1	
S51FCZM060120		12		17	23	—	—	M3	M3	11.3	
S51FCZM080080	8	8	17	17	23	—	—	M3	M3	11.3	2.6
S51FCZM080100		10		24	27	10	15	M3	M4	14	
S51FCZM080120		12		26	30	10	18	M3	M4	15.1	
S51FCZM100100	10	10	24	24	35	—	—	M4	M4	14	3.5
S51FCZM100120		12		26	35	14	18	M4	M4	15.1	
S51FCZM120120	12	12	26	26	38	—	—	M4	M4	15.1	5.1

\*Bore Tolerance: 2.5 & 3 mm +0.01  
 4, 5 & 6 mm +0.012  
 8 & 10 mm +0.015  
 12 mm +0.018

**NOTES:** 1.  $d_1$  and  $d_2$  bores concentric to within 0.025 mm T.I.R.  
 2. Fairloc® hubs require controlled shaft tolerances. Suggested tolerance according to g6, h6 or h7.

Other sizes and material available on special order.