

**SDPSI**

Inch

Inch

Inch

Inch

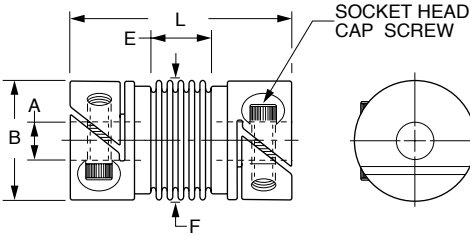
Inch

Inch

Inch

Inch

Inch

**Fairloc® Bellows Couplings****Stock Drive Products/Sterling Instrument****Phone: 516-328-3300****Fax: 516-326-8827****EASY INSTALLATION****READILY REPOSITIONED****FEATURES:**

- Absorbs end play in shafts
- Allows looser tolerances in mounting components
- Corrects for angular and parallel axis misalignment
- Zero backlash
- Constant angular velocity
- Dampens vibration and noise
- Fairloc® eliminates marred shafts

**MATERIAL:** Hubs – Brass

Bellows – Phosphor Bronze

Socket Head Screws – 300 Series Stainless Steel

Finish – Tin Plate

Catalog Number	A Bore Typical +.001 -.000	F Bellows Diameter ± .015	E Ref. Active Bellows Length ± .015	B Hub Diameter ± .010	L Overall Length ± .06	Screw Size
S50FP9-FBC12015	.1200			.433		
S50FP9-FBC12515	.1250	15/32	.242	.433	.92	#2-56
S50FP9-FBC18715	.1875			.495		
S50FP9-FBC18715A	.1878 / .1873	15/32	.230	.562	1.00	#4-40
S50FP9-FBC25021	.2500			.610		
S50FP9-FBC31221	.3125	21/32	.325	.682	1.16	#4-40
S50FP9-FBC37527	.3750	27/32	.352	.870	1.31	#6-32

**SPECIFICATIONS**

Catalog Number	Max. Torque oz. in.	Max. Angular Offset	Max. Lateral Offset	Max. Axial Motion	Torsional Deflection @ Max. Load
S50FP9-FBC12015	120				1.2°
S50FP9-FBC12515	120	5°	.015	+0.015, -.030	1.2°
S50FP9-FBC18715	150				1.5°
S50FP9-FBC18715A	180	4°	.010	+0.012, -.024	.8°
S50FP9-FBC25021					
S50FP9-FBC31221	200	6°	.015	+0.020, -.040	1.4°
S50FP9-FBC37527	300	6°	.015	+0.025, -.050	1.5°

**NOTE:** Fairloc® hubs require controlled shaft tolerances.

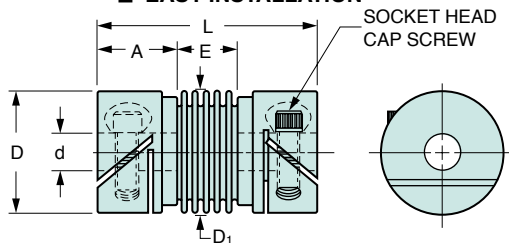
Suggested clearance fit between the bore and shaft is .0001 / .0008.

**SDP/SI**

Metric Metric Metric Metric Metric Metric Metric

**Fairloc® Bellows Couplings**

Stock Drive Products/Sterling Instrument ■ Phone: 516-328-3300 ■ Fax: 516-326-8827

**■ EASY INSTALLATION**

The projections shown are per ISO convention.

**MISALIGNMENT COMPENSATION**

Max. Lateral Offset – 0.4

**MATERIAL: Hubs – Brass**

**Bellows – Phosphor Bronze**

**Socket Head Screws – 300 Series Stainless Steel**

**Finish – Tin Plate**

**■ READILY REPOSITIONED****FEATURES:**

- Absorbs end play in shafts
- Allows looser tolerances in mounting components
- Corrects for angular and parallel axis misalignment
- Zero backlash
- Constant angular velocity
- Dampens vibration and noise
- Fairloc® eliminates marred shafts

Catalog Number	d* Bore H8	D <sub>1</sub> Bellows Diameter ± 0.4	E Active Bellows Length Ref.	D Hub Diameter ± 0.25	A Hub Length	L Overall Length ± 1.5	Screw Size
S50FP9MFBC0312	3			11			
S50FP9MFBC0412	4	11.9	6.4	12.5	8.5	23.4	M2
S50FP9MFBC0517	5			16			
S50FP9MFBC0617	6	16.7	8.5		10.5	29.5	M2.5
S50FP9MFBC0821	8			22			
S50FP9MFBC1021	10	21.4	9.3	25	12	33.3	M3
S50FP9MFBC1221	12			25			

**SPECIFICATIONS**

Catalog Number	Maximum Torque N•m	Maximum Angular Offset	Maximum Axial Motion	Spring Rate For Axial Deflection N/mm	Torsional Deflection @ Max. Load Degrees
S50FP9MFBC0312 S50FP9MFBC0412	0.85	5°	+0.38, -0.75	25.4	1.2°
S50FP9MFBC0517 S50FP9MFBC0617	1.4	6°	+0.5, -1	24.2	1.4°
S50FP9MFBC0821 S50FP9MFBC1021 S50FP9MFBC1221	2.12	6°	+0.65, -1.25	24.2	1.5°

\*Bore Tolerance:  
 3 mm +0.014  
 4, 5 & 6 mm +0.018  
 8 & 10 mm +0.022  
 12 mm +0.027

**NOTE:** Fairloc® hubs require controlled shaft tolerances.  
 Suggested tolerance according to g6, h6 or h7.

Other bores, finishes available on special order.