

Inch   Inch   Inch   Inch   Inch   Inch   Inch   Inch   Inch   Inch

# Shaftloc® HTD® Pulleys - 3 mm Pitch

Stock Drive Products/Sterling Instrument   ■   Phone: 516-328-3300   ■   Fax: 516-326-8827

■ MOLDED WITH METAL INSERT

■ SINGLE OR DOUBLE FLANGE

**PATENTED**

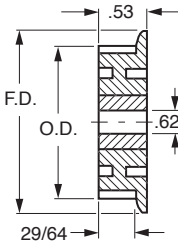


Fig. 1

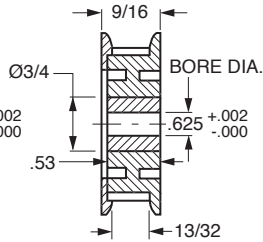
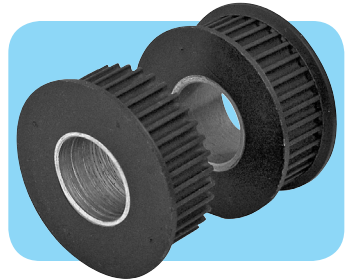


Fig. 2

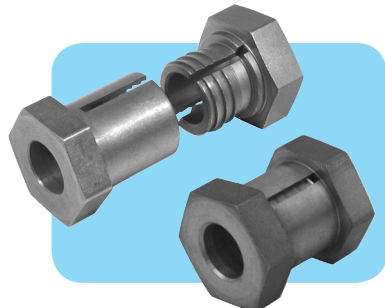
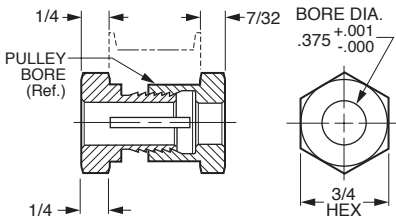


**FOR 9 mm BELTS (.354 INCH)**

**MATERIAL:** Pulley - Nylon - Black, Fiberglass Reinforced  
Insert - Steel, Overmolded

Catalog Number		No. of Grooves	P.D.	O.D.	F.D.
Single Flange – Fig. 1	Double Flange – Fig. 2				
A 6T23-H32SF0920	A 6T23-H32DF0920	32	1.203	1.173	1.32
A 6T23-H36SF0920	A 6T23-H36DF0920	36	1.353	1.323	1.47
A 6T23-H40SF0920	A 6T23-H40DF0920	40	1.504	1.474	1.62
A 6T23-H42SF0920	A 6T23-H42DF0920	42	1.579	1.549	1.70
A 6T23-H48SF0920	A 6T23-H48DF0920	48	1.805	1.775	1.92
A 6T23-H50SF0920	—	50	1.880	1.850	2.00
A 6T23-H60SF0920		60	2.256	2.226	2.37
A 6T23-H72SF0920		72	2.707	2.677	2.83

**NOTE:** The Shaftloc® shown below may be used to secure these pulleys on the shaft.



**MATERIAL:** 416 Stainless Steel

Catalog Number	Pulley Bore (Ref.)	Max. Torque Capacity* lb. in.
A 7Z37-030553	.625	250

\*Based on mating components being degreased before assembly with Shaftloc® coupling.

**NOTE:** A 3/4 O.D. x 5/8 I.D. x .05 thick washer, Catalog Number A 7X 8-C20050 is supplied.