

Inch   Inch   Inch   Inch   Inch   Inch   Inch   Inch   Inch   Inch



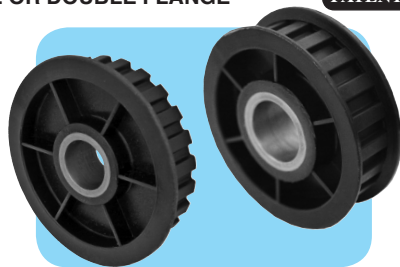
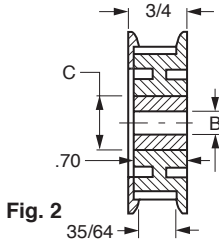
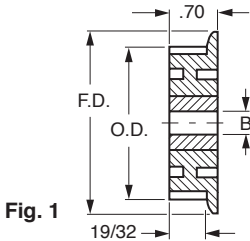
## Shaftloc® L Pulleys - 3/8 Pitch

Stock Drive Products/Sterling Instrument   ■   Phone: 516-328-3300   ■   Fax: 516-326-8827

■ MOLDED WITH METAL INSERT

■ SINGLE OR DOUBLE FLANGE

PATENTED

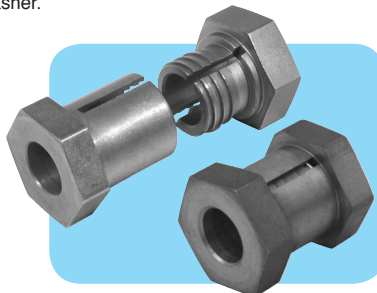
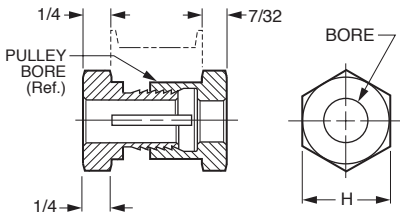


**MATERIAL:** Pulley - Nylon - Black, Fiberglass Reinforced  
Insert - Steel, Overmolded

FOR 1/2" BELTS

Catalog Number		No. of Grooves	P.D.	O.D.	F.D.	B +.002 -.000	C
Single Flange – Fig. 1	Double Flange – Fig. 2						
A 6T 4-H10SF5020	A 6T 4-H10DF5020	*10	1.194	1.164	1.49	.625	3/4
A 6T 4-H11SF5020	A 6T 4-H11DF5020	*11	1.313	1.283	1.63		
A 6T 4-H12SF5020	A 6T 4-H12DF5020	*12	1.432	1.402	1.75		
A 6T 4-H13SF5024	A 6T 4-H13DF5024	13	1.552	1.522	1.79	.750	1
A 6T 4-H14SF5024	A 6T 4-H14DF5024	14	1.671	1.641	2.00		
A 6T 4-H15SF5024	A 6T 4-H15DF5024	15	1.790	1.760	2.12		
A 6T 4-H16SF5024	A 6T 4-H16DF5024	16	1.910	1.880	2.22		
A 6T 4-H17SF5024	A 6T 4-H17DF5024	17	2.029	1.999	2.34		
A 6T 4-H18SF5024	A 6T 4-H18DF5024	18	2.149	2.119	2.47		
A 6T 4-H19SF5024	A 6T 4-H19DF5024	19	2.268	2.238	2.57		
A 6T 4-H20SF5024	A 6T 4-H20DF5024	20	2.387	2.357	2.74		
A 6T 4-H21SF5024	A 6T 4-H21DF5024	21	2.507	2.477	2.85		
A 6T 4-H22SF5024	A 6T 4-H22DF5024	22	2.626	2.596	2.95		
A 6T 4-H24SF5024	A 6T 4-H24DF5024	24	2.865	2.835	3.15		
A 6T 4-H28SF5024	A 6T 4-H28DF5024	28	3.342	3.312	3.55		
A 6T 4-H30SF5024	A 6T 4-H30DF5024	30	3.581	3.551	3.78		
A 6T 4-H32SF5024	A 6T 4-H32DF5024	32	3.820	3.790	4.05		

**NOTE:** Pulleys with 10 to 12 grooves do not have webs.  
\*Only these pulleys require a 3/4 O.D. x 5/8 I.D. x .050 thick washer.



**MATERIAL:** 416 Stainless Steel

SLEEVES Catalog Number	Pulley Bore (Ref.)	Shaftloc Bore +.001, -.000	H Hex Size	Max. Δ Torque Capacity lb.in.
§ 7Z37-030578	.625	.375	3/4	250
♦ 7Z37-040670	.750	.500	7/8	

ΔBased on mating components being degreased before assembly with Shaftloc® coupling.  
§ A 3/4 O.D. x 5/8 I.D. x .05 thick washer, Catalog Number A 7X 8-C20050 is supplied.  
♦ A 7/8 O.D. x 3/4 I.D. x .05 thick washer, Catalog Number A 7X 8-C24050 is supplied.