

SDPSI**M-Type Shaftloc®**

Stock Drive Products/Sterling Instrument

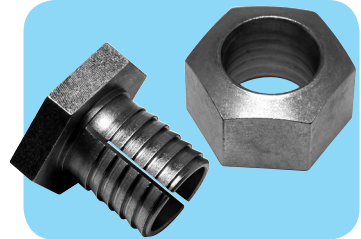
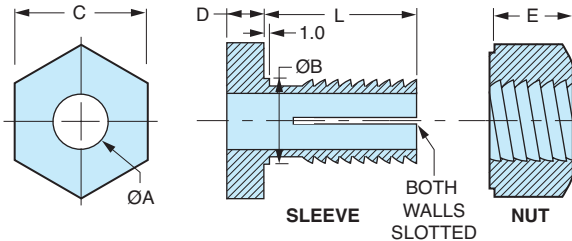
Phone: 516-328-3300

Fax: 516-326-8827

■ SELF-LOCKING

■ VIBRATION-RESISTANT

■ STAINLESS STEEL

PATENTED**FEATURES:**

- Nonmarring of shaft
- Installed with standard tools
- Reusable

MATERIAL: 416 Stainless Steel, Passivated

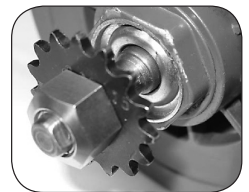
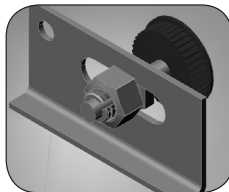
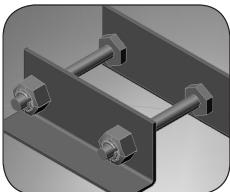
Sold in Pairs

Catalog Number	A +0.025	B -0.025	C	D	E	L
A 7Z36M0612	6	10	14	4	7	12
A 7Z36M1016	10	14	18	4	12	16
A 7Z36M1218	12	16	24	5	14	18

NOTE: Special sizes available upon request.

Diameters A and B concentric within 0.013 T.I.R.

Used as a locking device for rigidly mounting mechanical components onto a shaft. Due to its asymmetric thread geometry, a large radial clamping force is produced when the nut is tightened. It is a precision, dynamically balanced product suitable for high-speed applications. This simple two-piece keyless fastener can be installed within seconds, reducing assembly costs. Tightening the nut causes the slotted sleeve to contract, gripping the shaft and clamping the part to the sleeve at the same time. Keyways and screws are now obsolete; can be installed on shafts with existing keyways.



A superior method for building frames, mounting shafts, pins, rails or any cylindrical components to thin sheet metal or plastic walls.

Ideal in slots or oversized holes used for shaft position or belt tension applications.

Mounts hubless gears, sprockets, pulleys, cams or any thin walled components onto a shaft. Offers infinite radial and axial adjustments and quick lock and release action.

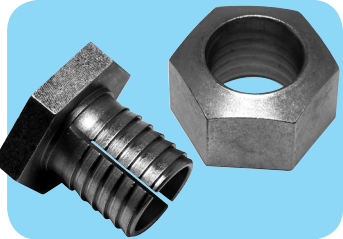
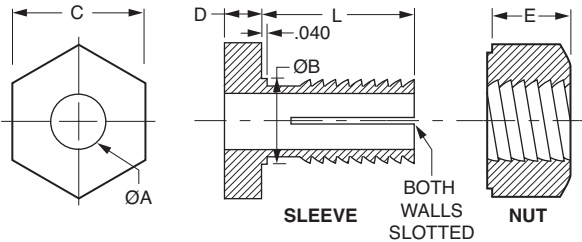
Inch Inch Inch Inch Inch Inch Inch



M-Type Shaftloc®

Stock Drive Products/Sterling Instrument ■ Phone: 516-328-3300 ■ Fax: 516-326-8827

- SELF-LOCKING ■ VIBRATION-RESISTANT ■ STAINLESS STEEL **PATENTED**



FEATURES:

- Nonmarring of shaft
- Installed with standard tools
- Reusable

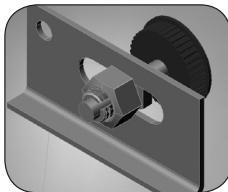
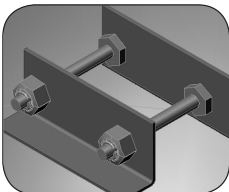
MATERIAL: 416 Stainless Steel, Passivated

Sold in Pairs

Catalog Number	A +.001 -.000	B +.000 -.001	C	D	E	L
A 7Z36-0842	.250	.375	.50	.15	.27	.42
A 7Z36-1260	.375	.500	.75	.15	.45	.60
A 7Z36-1671	.500	.625	.94	.20	.56	.71

NOTE: Special sizes available upon request.
 Diameters A and B concentric within .0005 T.I.R.

Used as a locking device for rigidly mounting mechanical components onto a shaft. Due to its asymmetric thread geometry, a large radial clamping force is produced when the nut is tightened. It is a precision, dynamically balanced product suitable for high-speed applications. This simple two-piece keyless fastener can be installed within seconds, reducing assembly costs. Tightening the nut causes the slotted sleeve to contract, gripping the shaft and clamping the part to the sleeve at the same time. Keyways and screws are now obsolete; can be installed on shafts with existing keyways.



A superior method for building frames, mounting shafts, pins, rails or any cylindrical components to thin sheet metal or plastic walls.

Ideal in slots or oversized holes used for shaft position walled components onto a shaft. Offers infinite radial and or belt tension adjustment axial adjustments and quick lock and release action.