

Inch Inch Inch Inch Inch Inch Inch Inch Inch Inch



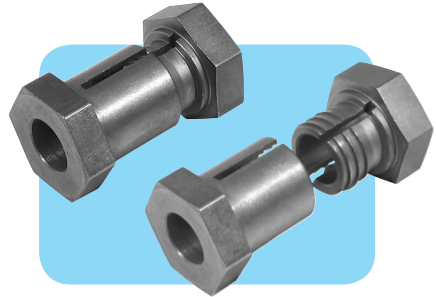
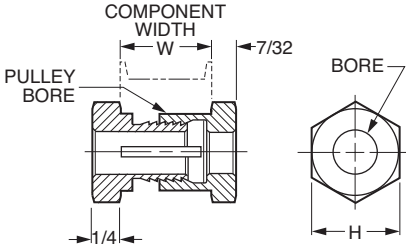
Double-Ended Shaftloc® Sleeves

Stock Drive Products/Sterling Instrument ■ Phone: 516-328-3300 ■ Fax: 516-326-8827

■ STAINLESS STEEL

■ 3/8 & 1/2 BORES

PATENTED



MATERIAL: 416 Stainless Steel

Catalog Number ^Δ	See Note	Pulley Bore +.001 -.000	Bore +.001 -.000	W Width	H Hex Size	Max.* Torque Capacity lb.in.
A 7Z37-030553	1	.625	.375	.52 - .62	3/4	250
A 7Z37-030578		.625	.375	.75 - .85	3/4	
A 7Z37-040670	2	.750	.500	.72 - .83	7/8	250

NOTE: 1. A 3/4 O.D. x 5/8 I.D. x .05 thick washer, Catalog Number A 7X 8-C20050 is supplied.

2. A 7/8 O.D. x 3/4 I.D. x .05 thick washer, Catalog Number A 7X 8-C24050 is supplied.

*Based on mating components being degreased before assembly with Shaftloc® coupling.

ΔCan be used with Precision Ground Shafting, Catalog Number: A 7X 1-...