



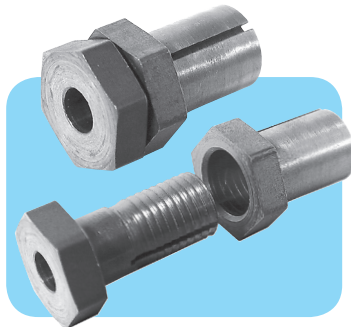
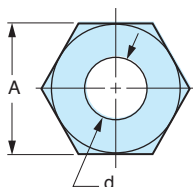
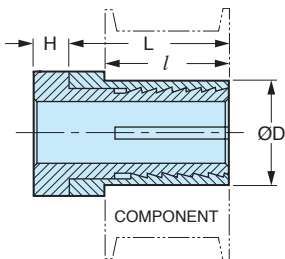
Single-Ended Shaftloc® Sleeves

Stock Drive Products/Sterling Instrument ■ Phone: 516-328-3300 ■ Fax: 516-326-8827

■ EASY ASSEMBLY

■ NO MARRING OF SHAFTS

PATENTED



The projections shown are per ISO convention.

- For Shaftloc® introduction and use, see page 3–13
- For optimum performance, the clearances between the shaft, Shaftloc® and housing should not exceed .001"
- Maximum torque capacity based on mating components being degreased before assembly with Shaftloc® coupling

MATERIAL: 416 Stainless Steel

Catalog Number ^Δ	d Bore +0.025	D -0.025	A Hex Size	L	l	H	Max. Torque Capacity N·m
A 7Z39M0306	3	6	8	13.2	10	3.17	1.1
A 7Z39M0408	4	8	10	15.2	12	3.17	2.8
A 7Z39M0610	6	10	13	15.6	12	3.6	3.3
A 7Z39M0812	8	12	15	20	16	4	9.9
A 7Z39M1016	10	16	19	20	16	4	11
A 7Z39M1218	12	18	21	25.5	20	5.6	16.5

^ΔCan be used with Precision Ground Shafting, Catalog Number **A 7X 1M**...