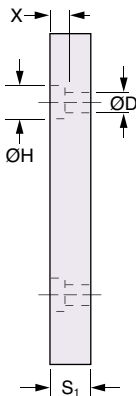
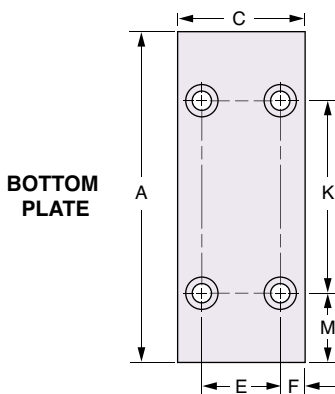
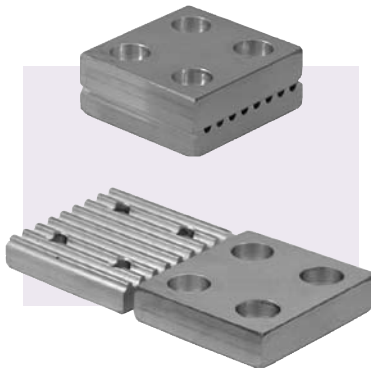
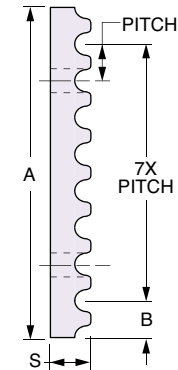
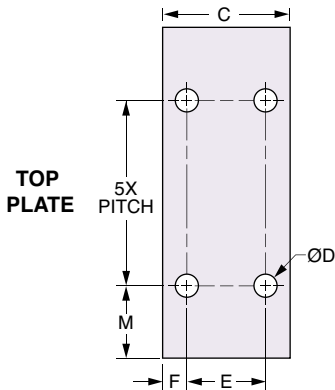




**GT®2 Timing Belt Clamp Kit – 2 mm & 3 mm Pitch**

Stock Drive Products/Sterling Instrument ■ Phone: 516-328-3300 ■ Fax: 516-326-8827

**■ USED IN LINEAR DRIVES**



2 mm PITCH						
F mm (in.)	M mm (in.)	S mm (in.)	H mm (in.)	K mm (in.)	X mm (in.)	S <sub>1</sub> mm (in.)
4.7 (.185)	4 (.157)	4 (.157)	4.4 (.173)	10 (.394)	2 (.079)	4 (.157)

3 mm PITCH						
F mm (in.)	M mm (in.)	S mm (in.)	H mm (in.)	K mm (in.)	X mm (in.)	S <sub>1</sub> mm (in.)
5.8 (.228)	6 (.236)	5 (.197)	6.5 (.256)	15 (.591)	3 (.118)	6 (.236)

Timing Belt Clamp Kit Includes:  
Top and Bottom Plate and Hardware for Assembly

**MATERIAL:** Aluminum

Sold as Kit

GT®2 • 2 mm PITCH							Toothed + Flat Plate Total Weight (with hardware) kg (lb.)
Catalog Number	Belt Width mm (in.)	A mm (in.)	B mm (in.)	C mm (in.)	D mm (in.)	E mm (in.)	
A16A51M04	4 (.157)	18 (.709)	2 (.079)	16.8 (.661)	2.4 (.094)	7.4 (.291)	0.006 (.01)
A16A51M06	6 (.236)			18.8 (.740)		9.4 (.370)	0.015 (.03)
A16A51M09	9 (.354)			21.8 (.858)		12.4 (.488)	0.017 (.04)

GT®2 • 3 mm PITCH							Toothed + Flat Plate Total Weight (with hardware) kg (lb.)
Catalog Number	Belt Width mm (in.)	A mm (in.)	B mm (in.)	C mm (in.)	D mm (in.)	E mm (in.)	
A16A53M06	6 (.236)	27 (1.063)	3 (.118)	22 (.866)	3.4 (.134)	10.4 (.409)	0.016 (.04)
A16A53M09	9 (.354)			25 (.984)		13.4 (.528)	0.019 (.04)

**NOTE:** Hardware for kit includes screws, washers and hex nuts for assembly.  
For replacement hardware kit, order: **A16A51MBOLTKIT** GT®2 2 mm Pitch  
**A16A53MBOLTKIT** GT®2 3 mm Pitch