

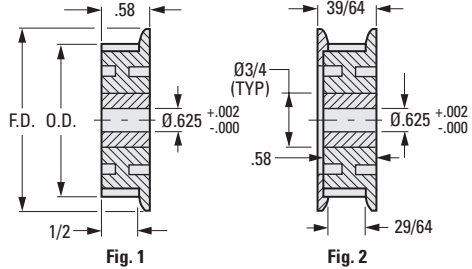
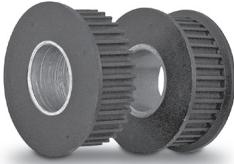
FOR 3/8" BELTS
 MOLDED WITH METAL INSERT
 SINGLE OR DOUBLE FLANGE

PHONE: 516.328.3300 • FAX: 516.326.8827 • WWW.SDP-SI.COM



> MATERIAL:

Pulley - Nylon - Black, Fiberglass Reinforced
Insert - Steel, Overmolded



| INCH COMPONENT | | No. of Grooves | P.D. | O.D. | F.D. |
|-------------------------|-------------------------|----------------|-------|-------|------|
| Catalog Number | | | | | |
| Single Flange Fig. 1 | Double Flange Fig. 2 | | | | |
| A 6T 3-H18SF3720 | A 6T 3-H18DF3720 | 18 | 1.146 | 1.126 | 1.38 |
| A 6T 3-H19SF3720 | A 6T 3-H19DF3720 | 19 | 1.210 | 1.190 | 1.43 |
| A 6T 3-H20SF3720 | A 6T 3-H20DF3720 | 20 | 1.273 | 1.253 | 1.50 |
| A 6T 3-H21SF3720 | A 6T 3-H21DF3720 | 21 | 1.337 | 1.317 | 1.57 |
| A 6T 3-H22SF3720 | A 6T 3-H22DF3720 | 22 | 1.401 | 1.381 | 1.63 |
| A 6T 3-H24SF3720 | A 6T 3-H24DF3720 | 24 | 1.528 | 1.508 | 1.76 |
| A 6T 3-H25SF3720 | A 6T 3-H25DF3720 | 25 | 1.592 | 1.572 | 1.80 |
| A 6T 3-H26SF3720 | A 6T 3-H26DF3720 | 26 | 1.655 | 1.635 | 1.87 |
| A 6T 3-H27SF3720 | A 6T 3-H27DF3720 | 27 | 1.719 | 1.699 | 1.93 |
| A 6T 3-H28SF3720 | A 6T 3-H28DF3720 | 28 | 1.783 | 1.763 | 2.01 |
| A 6T 3-H29SF3720 | A 6T 3-H29DF3720 | 29 | 1.846 | 1.826 | 2.07 |
| A 6T 3-H30SF3720 | A 6T 3-H30DF3720 | 30 | 1.910 | 1.890 | 2.14 |
| A 6T 3-H32SF3720 | A 6T 3-H32DF3720 | 32 | 2.037 | 2.017 | 2.27 |
| A 6T 3-H36SF3720 | A 6T 3-H36DF3720 | 36 | 2.292 | 2.272 | 2.52 |
| A 6T 3-H40SF3720 | A 6T 3-H40DF3720 | 40 | 2.546 | 2.526 | 2.78 |
| A 6T 3-H42SF3720 | A 6T 3-H42DF3720 | 42 | 2.674 | 2.654 | 2.90 |
| A 6T 3-H48SF3720 | A 6T 3-H48DF3720 | 48 | 3.056 | 3.036 | 3.29 |
| A 6T 3-H60SF3720 | A 6T 3-H60DF3720 | 60 | 3.820 | 3.800 | 4.05 |

APPLICABLE SHAFTLOC® SLEEVE

> MATERIAL:

416 Stainless Steel

> SPECIFICATION:

A 3/4 O.D. x 5/8 I.D. x .05 thick washer,
 Catalog Number **A 7X 8-C20050** is supplied.

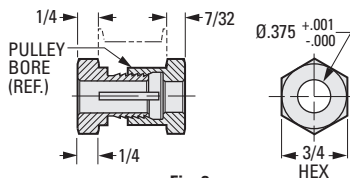


Fig. 2
 (13 to 32 Grooves)

| INCH COMPONENT | | |
|----------------|--------------------|-------------------------------|
| Catalog Number | Pulley Bore (Ref.) | Max. Torque Capacity* lbf in. |
| A 7Z37-030553 | .625 | 250 |

* Based on mating components being degreased before assembly with Shaftloc® coupling.