

SELF-LOCKING  
 VIBRATION-RESISTANT  
 NONMARRING OF SHAFT  
 INSTALLED WITH STANDARD TOOLS  
 REUSABLE

PHONE: 516.328.3300 • FAX: 516.326.8827 • WWW.SDP-SI.COM

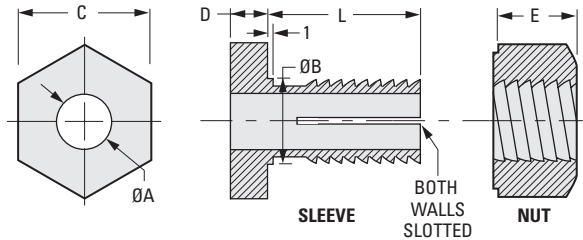
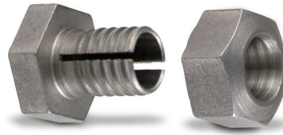


➤ **MATERIAL:**  
 416 Stainless Steel, Passivated

➤ **SPECIFICATIONS:**  
 Can be installed on shafts with existing keyways.

Special sizes available upon request.

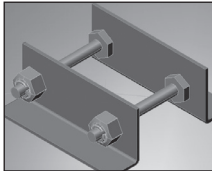
Sold in pairs



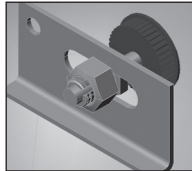
**METRIC COMPONENT**

| Catalog Number | A Dia.<br>+0.025<br>0 | B Dia.<br>0<br>-0.025 | C  | D | E  | L  |
|----------------|-----------------------|-----------------------|----|---|----|----|
| A 7Z36M0612    | 6                     | 10                    | 14 | 4 | 7  | 12 |
| A 7Z36M1016    | 10                    | 14                    | 18 |   | 12 | 16 |
| A 7Z36M1218    | 12                    | 16                    | 24 | 5 | 14 | 18 |

Diameters A and B concentric within 0.013 T.I.R.



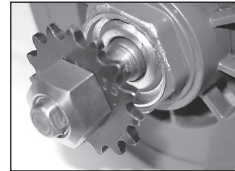
A superior method for building frames, or mounting shafts, pins, rails or any cylindrical components to thin sheet metal or plastic walls.



Ideal in slots or oversized holes used for shaft position or belt tension adjustment applications.



Mounts hubless gears, sprockets, pulleys, cams or any thin walled components onto a shaft. Offers infinite radial and axial adjustments and quick lock and release action.



SELF-LOCKING  
 VIBRATION-RESISTANT  
 NONMARRING OF SHAFT  
 INSTALLED WITH STANDARD TOOLS  
 REUSABLE

PHONE: 516.328.3300 • FAX: 516.326.8827 • WWW.SDP-SI.COM



**> MATERIAL:**

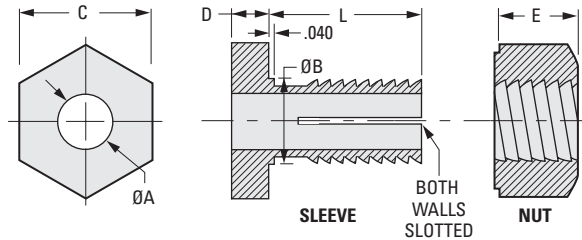
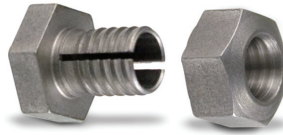
416 Stainless Steel, Passivated

**> SPECIFICATIONS:**

Can be installed on shafts with existing keyways.

Special sizes available upon request.

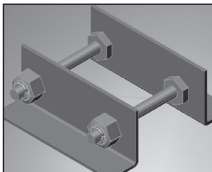
Sold in pairs



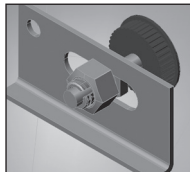
**INCH COMPONENT**

| Catalog Number | A Dia.<br>+.001<br>-.000 | B Dia.<br>+.000<br>-.001 | C   | D   | E   | L   |
|----------------|--------------------------|--------------------------|-----|-----|-----|-----|
| A 7Z36-0842    | .250                     | .3125                    | .50 | .15 | .27 | .42 |
| A 7Z36-1260    | .375                     | .500                     | .75 |     | .45 | .60 |
| A 7Z36-1671    | .500                     | .625                     | .94 | .20 | .56 | .71 |

Diameters A and B concentric within .0005 T.I.R.



A superior method for building frames, or mounting shafts, pins, rails or any cylindrical components to thin sheet metal or plastic walls.



Ideal in slots or oversized holes used for shaft position or belt tension adjustment applications.



Mounts hubless gears, sprockets, pulleys, cams or any thin walled components onto a shaft. Offers infinite radial and axial adjustments and quick lock and release action.

