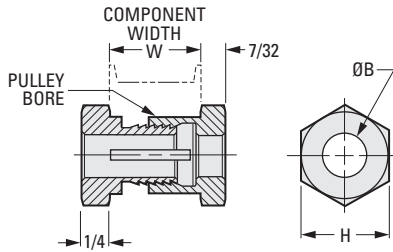


3/8 & 1/2 BORE

PHONE: 516.328.3300 • FAX: 516.326.8827 • WWW.SDP-SI.COM

> MATERIAL:
416 Stainless Steel

Can be used with Precision Ground Shafting,
Catalog Number **A 7X 1-...**



INCH COMPONENT						
Catalog Number	See Note	Pulley Bore +.001 -.000	B Bore +.001 -.000	W Width	H Hex Size	Max.* Torque Capacity lbf in.
A 7Z37-030553	1	.625	.375	.52 – .62	3/4	250
A 7Z37-030578						
A 7Z37-040670	2	.750	.500	.72 – .83	7/8	

NOTES: 1. A 3/4 O.D. x 5/8 I.D. x .05 thick washer, Catalog Number **A 7X 8-C20050** is supplied.
2. A 7/8 O.D. x 3/4 I.D. x .05 thick washer, Catalog Number **A 7X 8-C24050** is supplied.

* Based on mating components being degreased before assembly with Shaftloc® coupling.