

EASY ASSEMBLY
NO MARRING OF SHAFTS

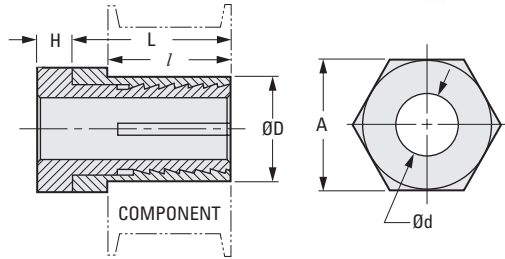
PHONE: 516.328.3300 • FAX: 516.326.8827 • WWW.SDP-SI.COM



> MATERIAL:
416 Stainless Steel

> SPECIFICATIONS:
For optimum performance, the clearances between the shaft, Shaftloc® and housing should not exceed 0.0254 mm.
Maximum torque capacity based on mating components being degraded before assembly with Shaftloc® coupling.

Can be used with Precision Ground Shafting, Catalog Number **A 7X 1M...**



The projections shown are per ISO convention.

METRIC COMPONENT

Catalog Number	d Bore +0.025 0	D Dia. 0 -0.025	A Hex Size	L	l	H	Max. Torque Capacity N • m
A 7Z39M0306	3	6	8	13.2	10	3.17	1.1
A 7Z39M0408	4	8	10	15.2	12		2.8
A 7Z39M0610	6	10	13	15.6		20	3.6
A 7Z39M0812	8	12	15	20	16		4
A 7Z39M1016	10	16	19			20	
A 7Z39M1218	12	18	21	25.5	20		8.25
A 7Z39M1420	14	21	27			33.2	
A 7Z39M1622	16	24	30	43	25		9.02
A 7Z39M1825	18	27	32			43	

EASY ASSEMBLY
NO MARRING OF SHAFTS

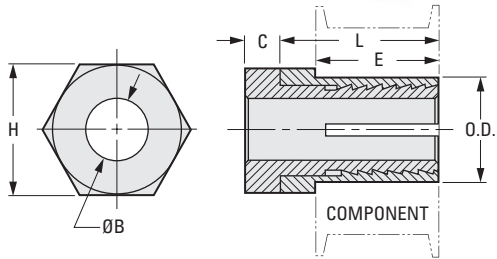
PHONE: 516.328.3300 • FAX: 516.326.8827 • WWW.SDP-SI.COM



► **MATERIAL:**
416 Stainless Steel

► **SPECIFICATIONS:**
For optimum performance, the clearances between the shaft, Shaftloc® and housing should not exceed .001".
Maximum torque capacity based on mating components being degreased before assembly with Shaftloc® coupling.

Can be used with Precision Ground Shafting, Catalog Number **A 7X 1-...**



INCH COMPONENT

Catalog Number	B Bore +.001 -.000	O.D. +.000 -.001	H Hex Size	L	E	C	Max. Torque Capacity lbf in.
A 7Z39-0408	.125	.250	3/8	1/2	.375	1/8	15
A 7Z39-0612	.1875	.375	1/2	21/32	.500	5/32	55
A 7Z39-0812	100						
A 7Z39-0816	.250	.500	5/8	13/16	.625	3/16	200
A 7Z39-1216	.375						.625
A 7Z39-1220	.500	.750	7/8				